

2005-2009 Mustang Side Scoops - Painted - Installation Instructions



The below installation instructions work for the following products:

- **2005-2009 Mustang Side Scoops - Painted**

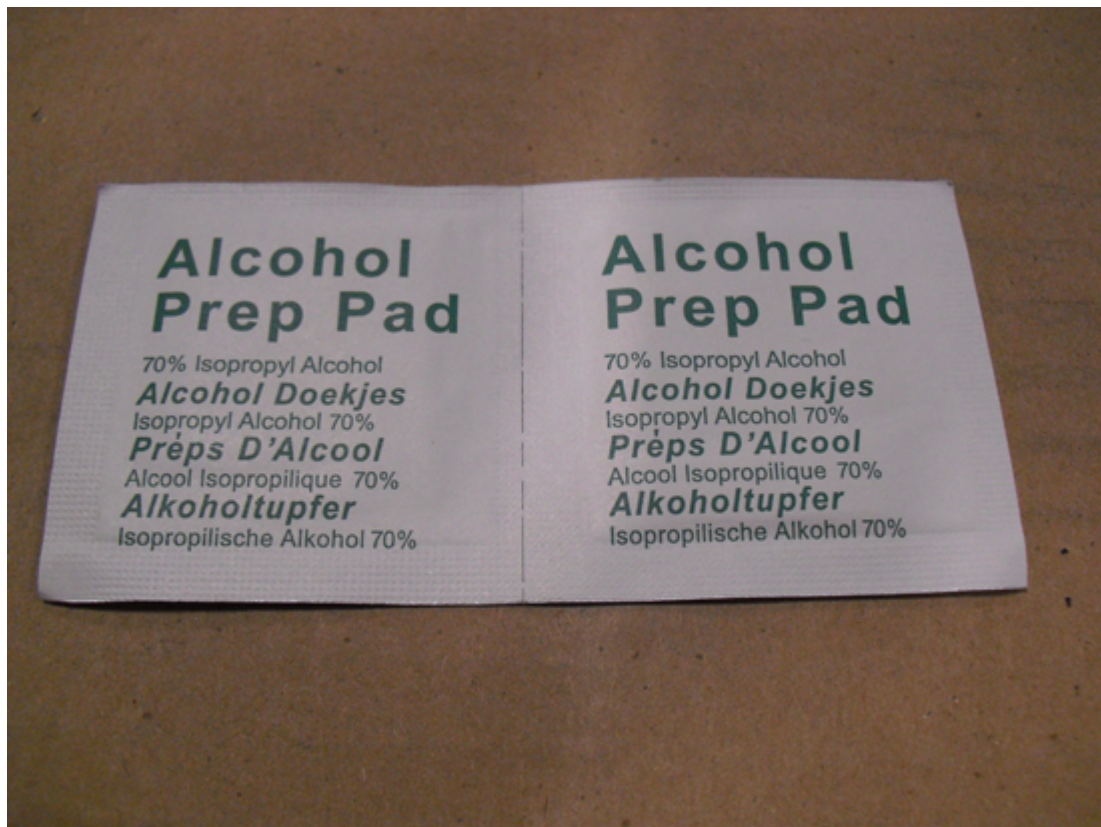


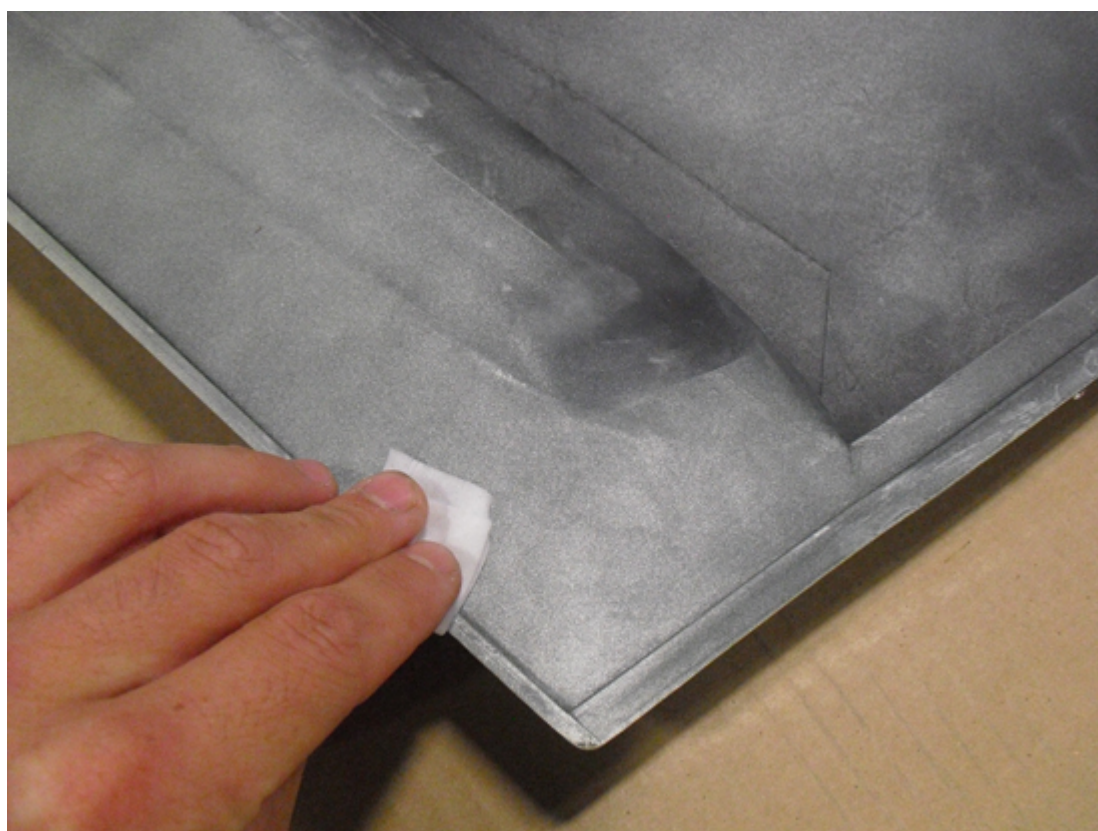
Please read through the instructions carefully before starting this project. Take the time to get all the materials together as well as all the safety equipment.

Installation:

1. Using the supplied 3M Automotive Adhesion Promoter, thoroughly clean the surface of the side scoop where the adhesive tape will be applied. Using the supplied Alcohol Prep Pads, thoroughly clean the surface of the vehicle where the scoop will be applied.

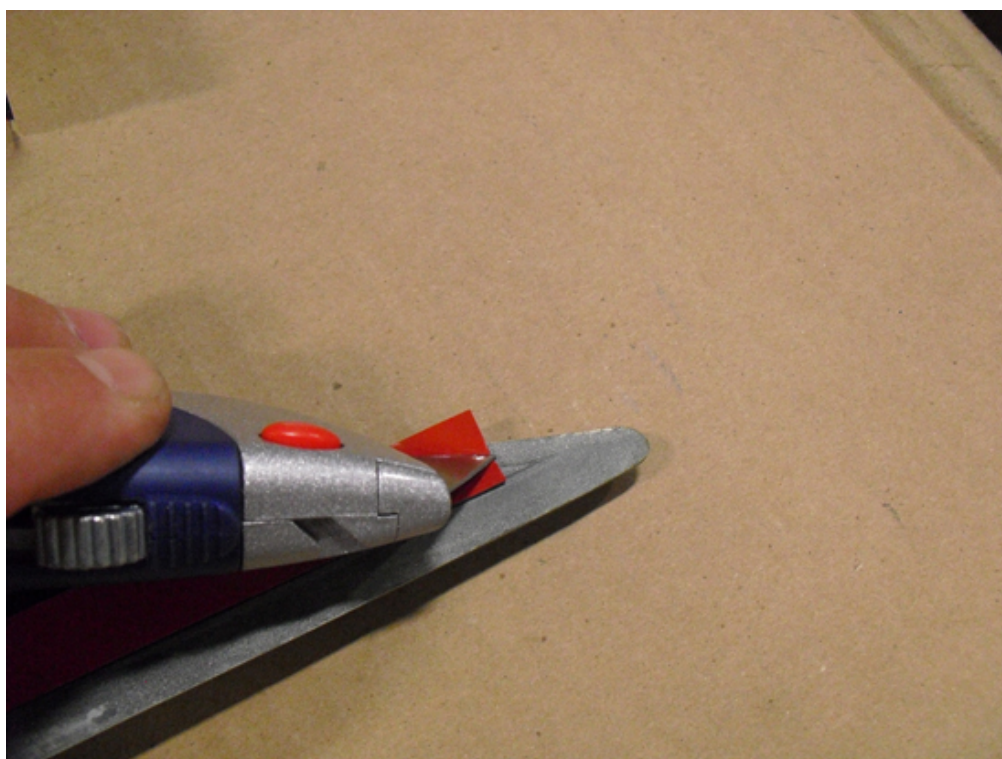
Caution: Do not use 3M Adhesion Promoter on vehicle's painted surfaces.



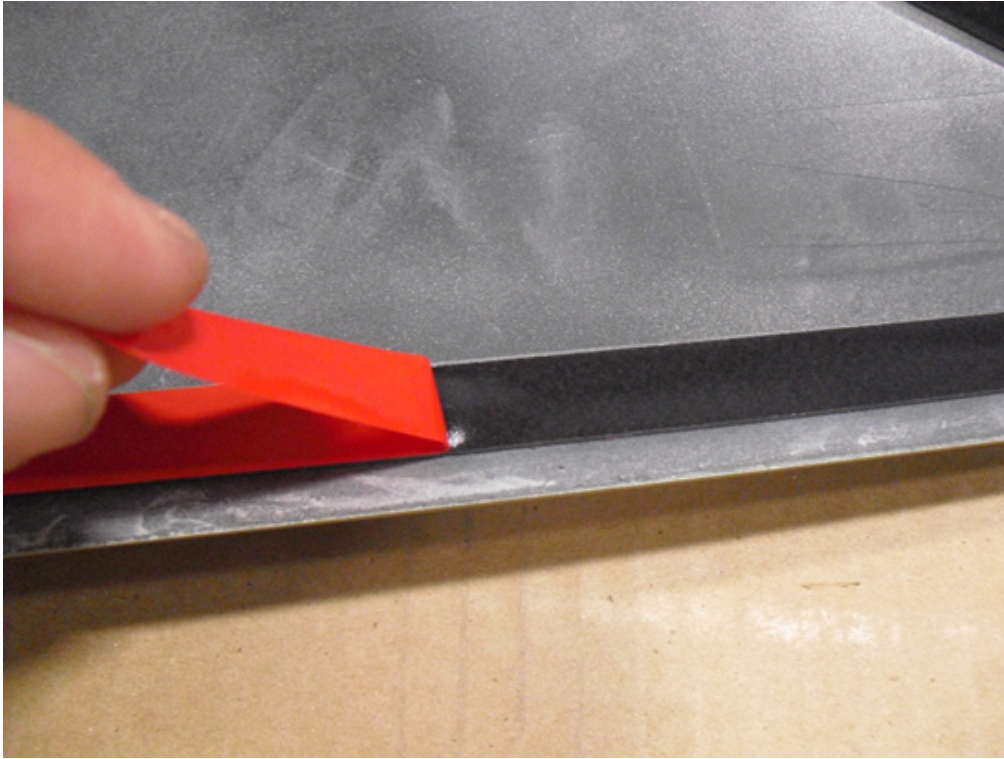




2. Apply the supplied adhesive tape to the outside edges of the side scoop, making sure that it is not extending past the edges. Tip: Make sure to use adhesive on outer edges of corners, this will ensure a proper fit once scoop is applied to vehicle. Use a utility knife to cut remove excess adhesive tape.



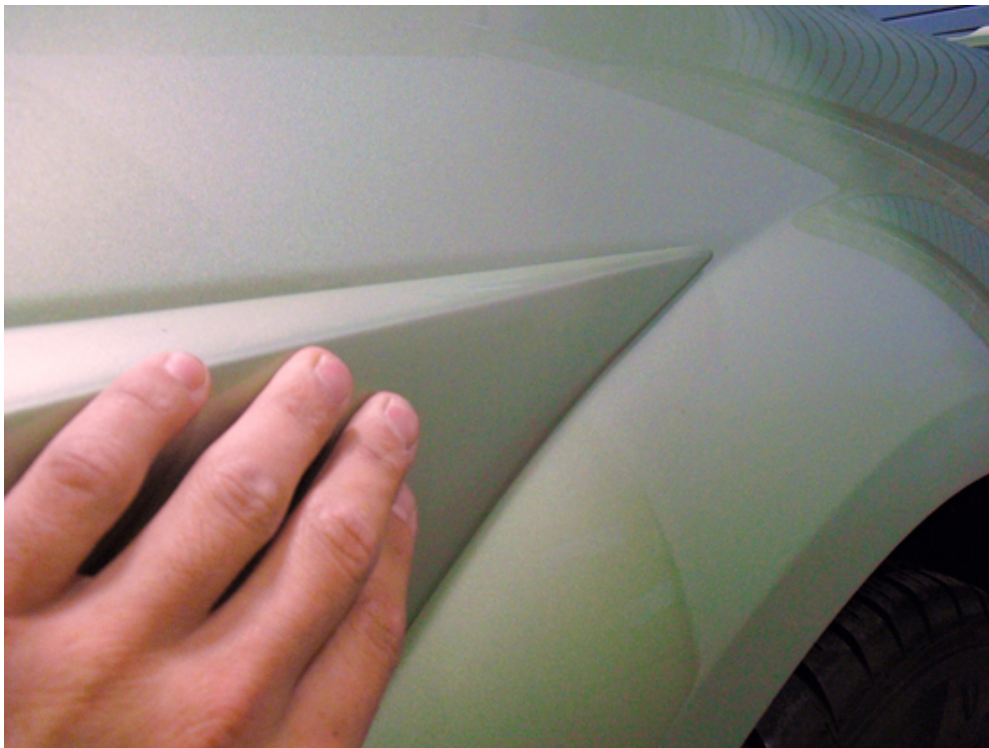
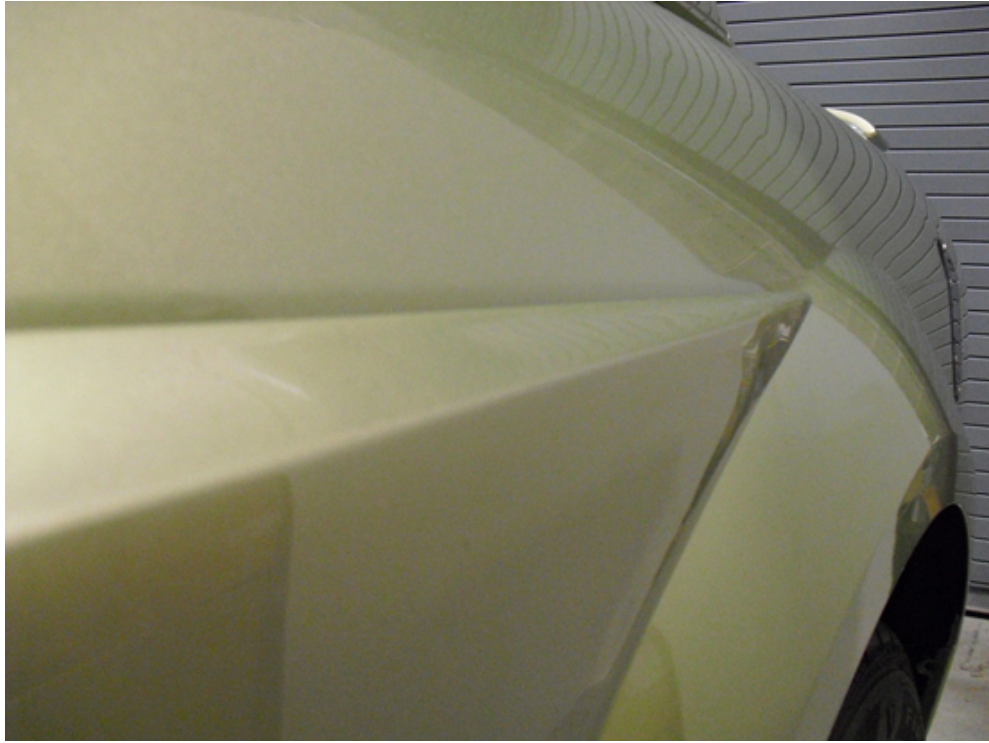
3. Peel backing from adhesive tape on the side scoop.



4. Lightly place side scoop on vehicle, taking care to align upper corner with body line and door opening as shown below.



5. When certain that scoop is properly aligned, press down firmly where adhesive tape was applied to ensure a proper fit.





6. Repeat all steps for remaining side scoop to complete installation.

Installation instructions provided by Stack Racing

Find more **how-tos**, **instructions** and **videos** at www.americanmuscle.com!