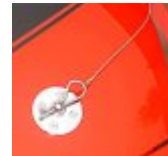


## Mustang Hood Pin Appearance Kit Installation Guide



The below installation instructions work for the following products:

- Mustang Chrome Hood Pin Kit
- Mustang Black Hood Pin Kit



### Tools Required:

- Drill (optional)
- Isopropyl Alcohol (rubbing alcohol)
- Paper Towels
- Screwdriver
- Tape Measure
- Wax China Marker

### Installation:

**Note:** Allow the car to stay in the shade for about 20 minutes to cool the surface of the hood before you begin.

1. Use Rubbing Alcohol to clean the area of the Hood where you will be placing the Hood pins.



2. Temporarily place the Hood Pin's on the hood of your Mustang. When happy with the placement of the Hood Pin carefully measure the location so you can mirror it for both the passenger and driver side. You can use a Wax China Marker to temporarily mark the locations on the hood.

**Note:** Most people will try to align the Hood Pin Appearance Kit on top of the hood to match the location of the rubber hood stops under the hood.

3. Peel the backing off the Hood Pins and carefully place them on the hood one at a time in the locations you marked. Be sure you face the two Hood Pins in the same direction so that they mirror each other.

**Note:** If not it can make the car look very SLOPPY.

4. With the Hood Pins now in place you can attach the lanyards (the cable) to them. Just slide the Pin into the hole of the Hood Pin (holder). Now you just need to attach the other end of the lanyards to the car.

**Note:** Seeing that this is a Faux or Fake Hood Pin Kit most people attach the other end of the lanyards to the under-side of the hood so that way they can open the hood easily without having to disconnect the lanyards every time they need to open their Mustangs Hood.

5. If the underside of your hood already has holes in it from the factory hood liner you can simply screw your lanyards into one of the existing holes (one on the driver side and the other on the passenger side). If not you will need to drill two small holes into the underside of the hood, one on the passenger side and the other on the driver side.

**Note:** Be careful not to drill through the top of the hood.



6. With the lanyards now in place, close the hood, clean up the marks from the Wax China Marker and enjoy the cool retro look.



Finished Installation

Installation instructions provided by AmericanMuscle customer Nusret Hodzic

Find more **how-tos**, **instructions** and **videos** at [www.americanmuscle.com](http://www.americanmuscle.com)!