

Installation Instructions for Mustang Billet Fuel Door (94-04)

Tools Required:

T20 Torx Bit & Driver
8mm Socket & Ratchet
Allen Head Bits

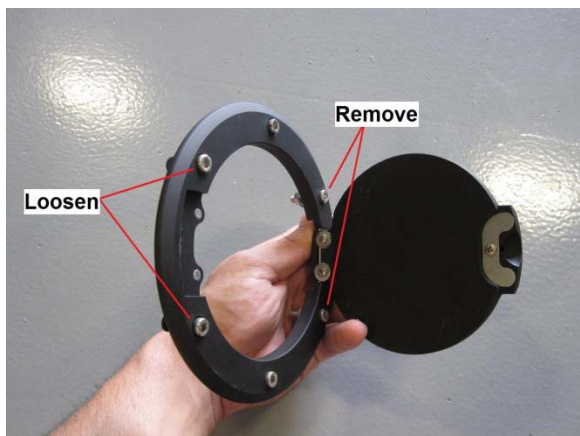
Step 1:

Use the T20 Torx bit to remove the rubber bumpers and two screws securing the factory fuel door to the body. Remove the fuel door from the vehicle (you may have to remove the fuel cap to get it out).



Step 2:

Remove the two Allen head screws nearest the hinge on the new fuel door completely. Loosen the two Allen head screws securing the locating tabs on the opposite side, but do not remove them completely.



Step 3:

Hook the tabs on the new fuel door to the body towards the rear of the vehicle. Place the Allen head screws you removed from the hinge side through both the fuel door and the body. Use an Allen key or bit to tighten the screws by the hinge as shown. Once tightened, place the supplied nuts on the rear of the screws and tighten with an 8mm socket.



Step 4:

Once the hinge side of the door is secure, tighten the Allen head screws securing the tabs to the rear of the body as shown. This completes the installation of your new Billet Fuel Door.

