

How to Install a Pony Delete Billet Grille for a 1999-2004 Mustang



The below installation instructions work for the following products:

- [Polished Mustang Pony Delete Billet Grille \(99-04\)](#)
- [Black Mustang Pony Delete Billet Grille \(99-04\)](#)

Here at American Muscle, we're all about DIY (do it yourself). Of course, there's nothing wrong with seeking out a little bit of tech help prior to taking on an installation on your own. Our Mustang installation guides will provide valuable instructions and hopefully answer any how-to questions that you may have along the way.

Preparation

Please read through the instruction from start to finish before starting this project. If you can access the rear or your lower grille from underneath your car without raising it, you should be able to complete this project; otherwise, you will have to lift the car.

Tools needed:

- Small Socket and Wrench Set
- Small Philips Screwdriver
- Marking Implement (ex. permanent marker)
- Drill
- 3/16" Fiberglass Drill bit
- Safety Glasses

Optional Tools

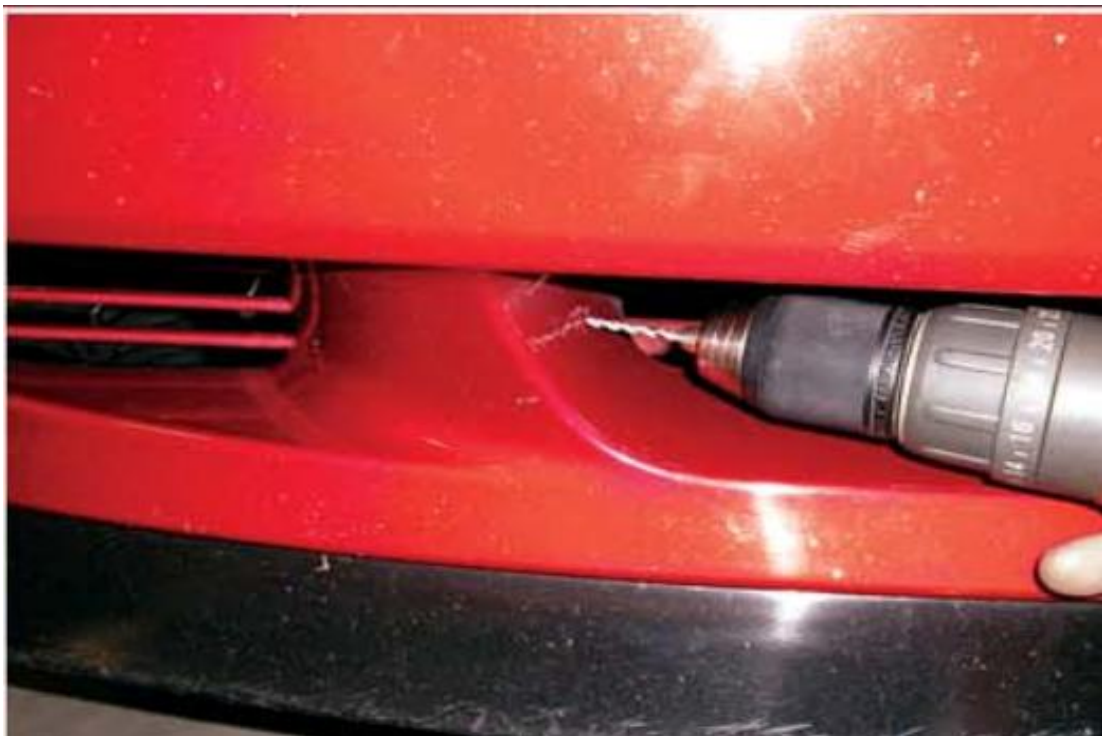
- Droplight or Other Portable Lighting Source
- Jack and Jackstands (or **safe** alternative)

Installation:

1. If your car's setup prevents you from accessing the rear of the lower grille, use your preferred method for raising the front of your car to gain access.
2. An additional set of hands will be very useful for this installation. Center the grille insert in the bumper opening. Note that you may need to bend the billet bars slightly to align with your particular car's fit.
3. Have your assistant hold the grille in place. On each side of the grille, mark the location of the screw inserts on the tabs on the back of the grille for drilling with your permanent marker, a sharp scribe, or other marking implement. You may need to bend the tabs slightly to accommodate your car's ideal fit.



4. Remove the grille. Using your marked locations, drill a hole in each side of the lower grille. You will need to use a 3/16" for this, however, you may minimize chipping by drilling a smaller pilot hole before drilling with the larger bit (or by using masking tape).



5. DO NOT DRILL all the way through your lower grille's side opening-you only need to drill through the first panel.

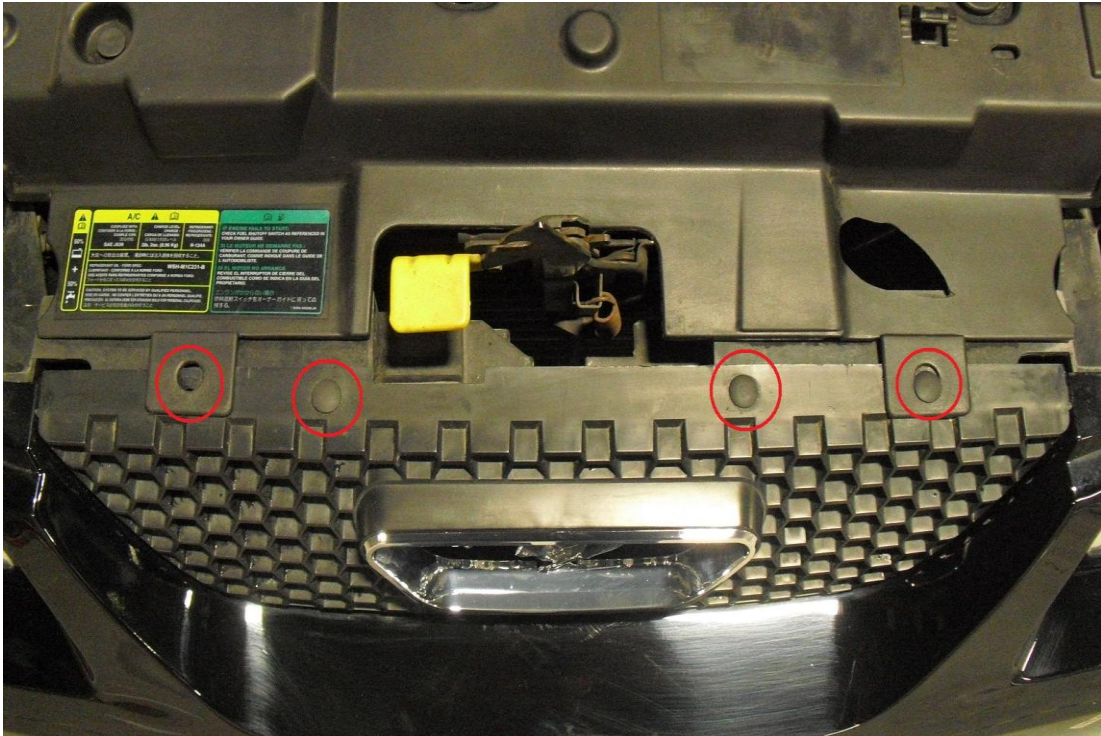


6. Re-center the grille. Have your assistant hold the grille from the front.
7. From the rear of the grille, insert one of the provided Philips screws in each tab in the bracket and through the drilled holes. Secure each screw with the provided curved flat nuts.
8. Congratulations, your finished! Enjoy your new billet grille from Stack Racing.

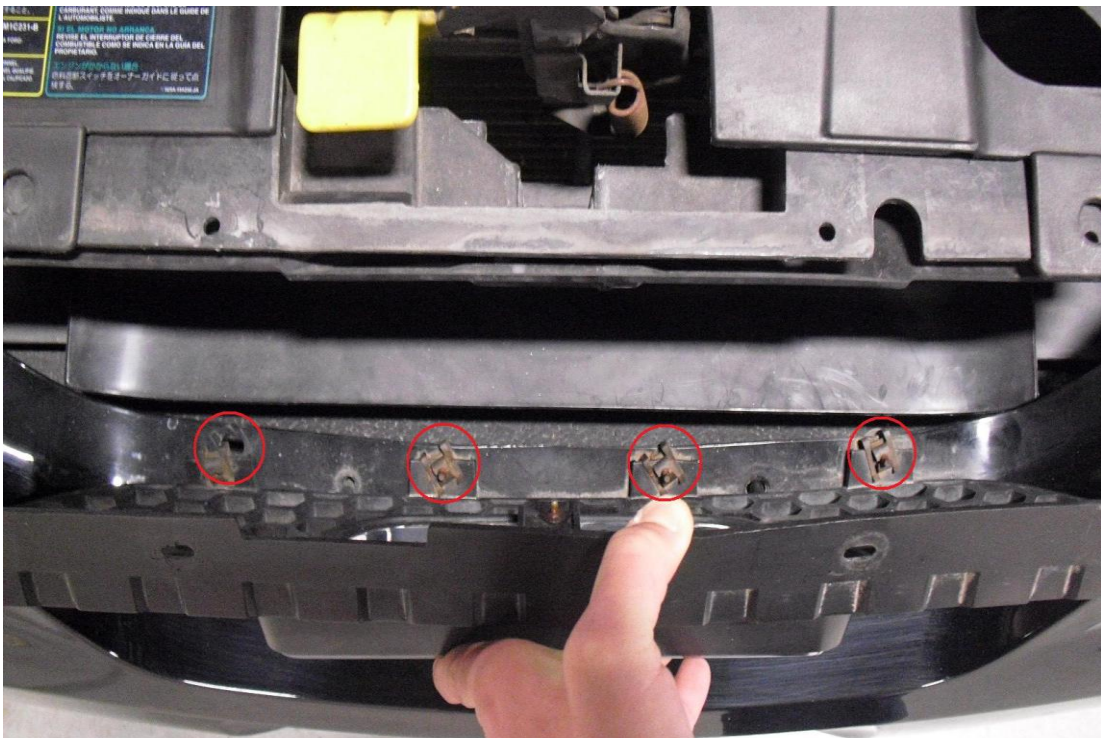


99-04 Upper Billet Grille (Pony) Installation

1. Open hood and remove four plastic retaining pins holding factory grille to [radiator](#) support.



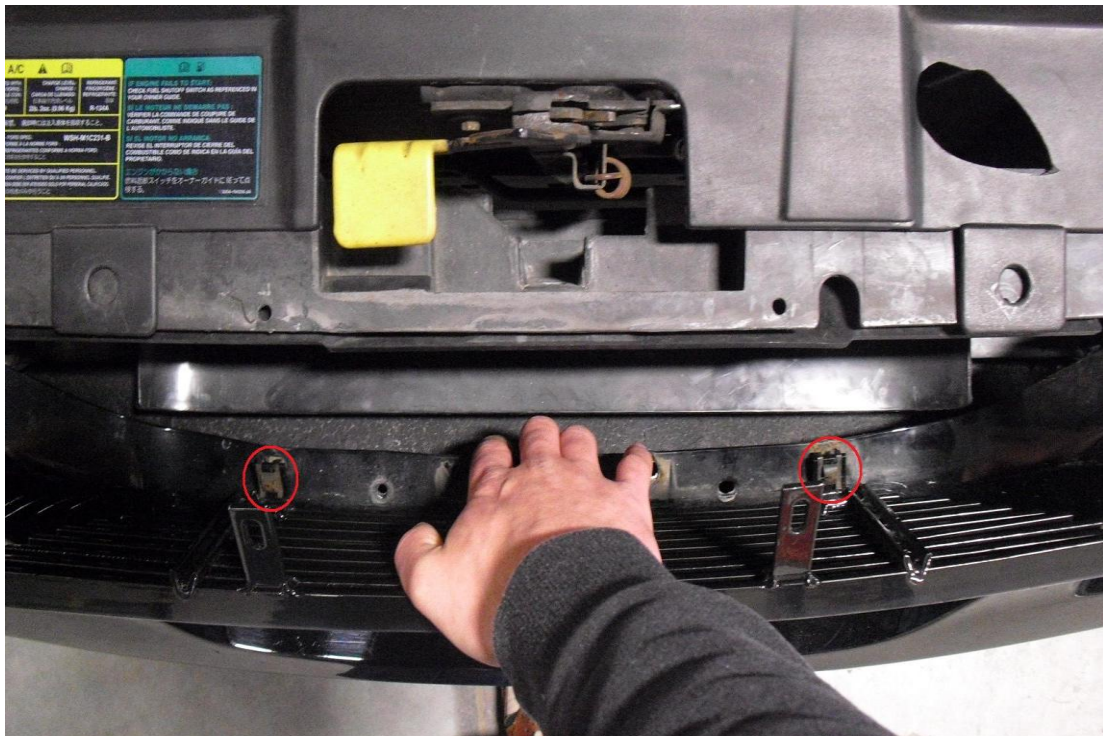
2. Once the upper part of the grille is free, carefully pry the grille back and use a 7mm socket or wrench to remove the four bolts holding the lower part of the grille to the bumper.



3. Remove two of the threaded clips from your factory honeycomb grille and place them on the lower mounting brackets of the billet replacement grille.



4. Attach the lower part of the billet grille to the bumper using two of the bolts you removed in Step 2.



5. Attach the upper grille using the factory plastic retaining pins that you removed in Step 1 to complete the installation of your upper billet replacement grille.

