

2015+ Ford F150 Bumper Grille Installation Instructions

Congratulations on your purchase of a high quality PUTCO product. Should you need any application or technical assistance, feel free to call us at: 1-800-247-3974
Monday-Friday 8:00 a.m. - 5:00 p.m. (Central Standard Time)
Contact your PUTCO dealer for other quality accessories.

Please read all instructions before installation and to check to see that all parts are included.

KIT CONTENTS:	
Description	Qty.
Bumper Grille	1
Alcohol Pad	1
License Plate Bracket	1
Hardware Kit (10690)	1
For Lighted Grille Only (below)	
Light Bar (Installed)	1
Wiring Harness	1
Switch	1
Light Bar Installation Instructions	1

Tools Needed

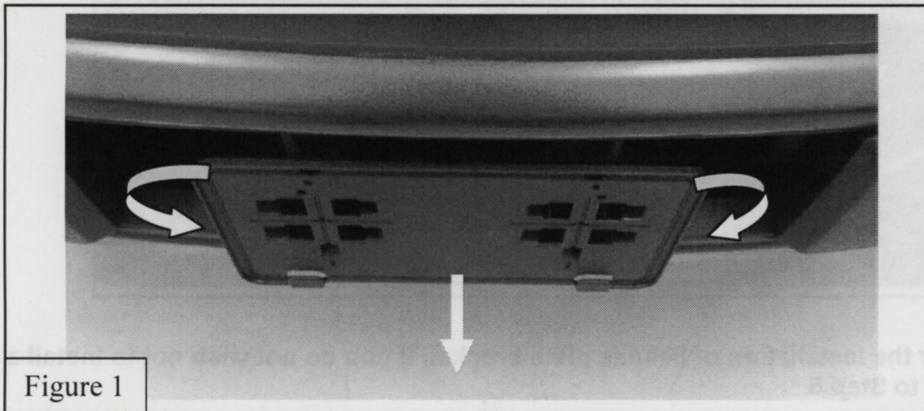
- Pliers
- Flat Head & Philips Screwdriver
- Rubber Mallet
- 7/16" Wrench

Bumper Grille Installation

Attention:

Truck needs to be washed with soap and water in taped areas. Tape needs to be installed in temperatures above 18°C (64°F) and allowed 24 hours to fully set.

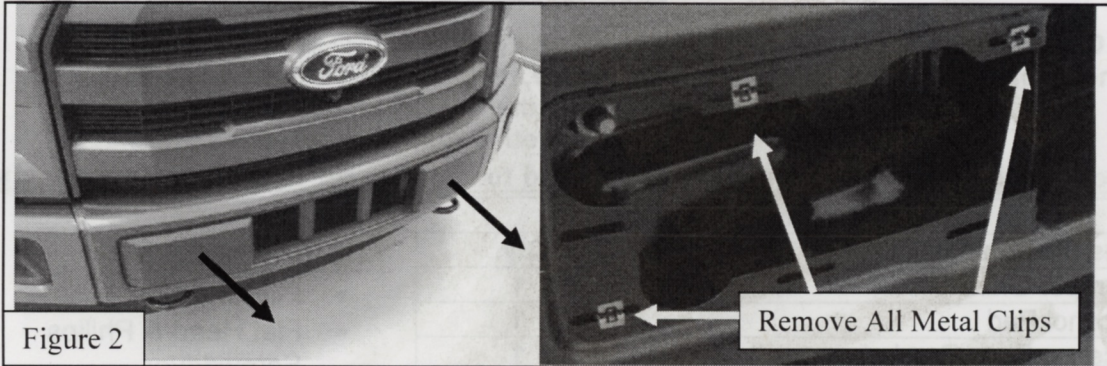
- 1 Remove bumper grille from packaging. Check to see if all parts from above table are included.
2. Remove factory plastic front license plate bracket, **if truck has front license plate**. Flex bracket until both sets of clips release. Inner clips may need to be released with flat head screwdriver. Refer to **Figure 1**



LIMITED 90 DAY WARRANTY

Putco guarantees its Stainless Steel and Aluminum products against defects in workmanship and material for as long as you own your vehicle. All painted products have a 90 day warranty on the painted surface. Any defects resulting from faulty material or workmanship will be warranted by Putco and repaired or replaced at our discretion. Putco assumes no extra labor costs. Damages caused by freight carriers, improper installation, misuse, collision, or neglect will not be warranted by Putco.

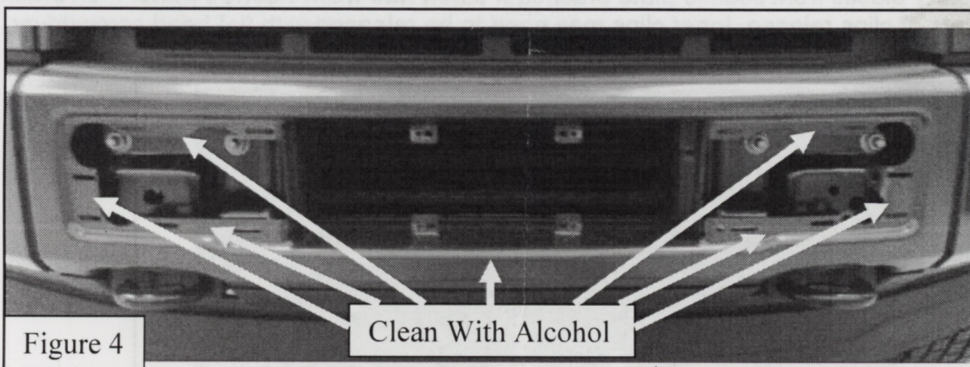
Remove factory front plastic bumper trim from bumper. Pull or pry off trim with a flat head screwdriver. Verify that all metal clips are removed with bumper trim. If not, remove the remaining ones with pliers or flat head screwdriver. Refer to **Figure 2**



3. Insert supplied clip nuts in locations shown in Figure 3. Arrows show direction of installation.



4. Use alcohol pad to clean the locations shown in **Figure 4**

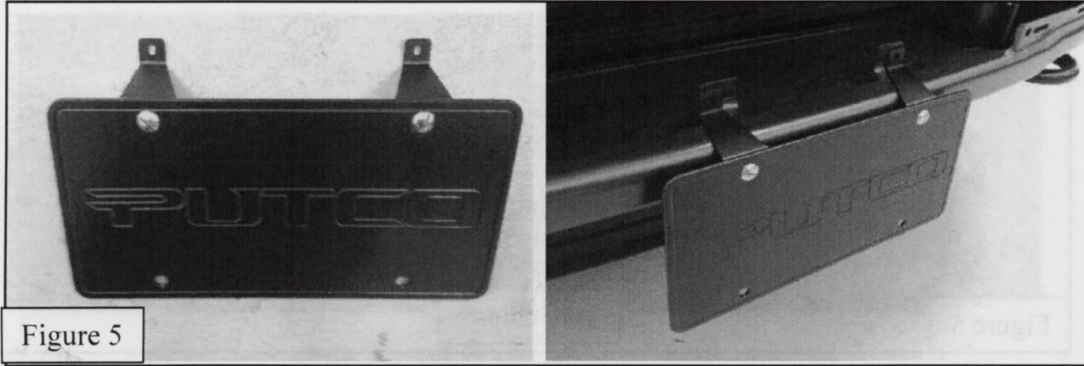


Note: Step 5 is for the installation of license plate bracket. If you do not wish to install a license plate skip to Step 6

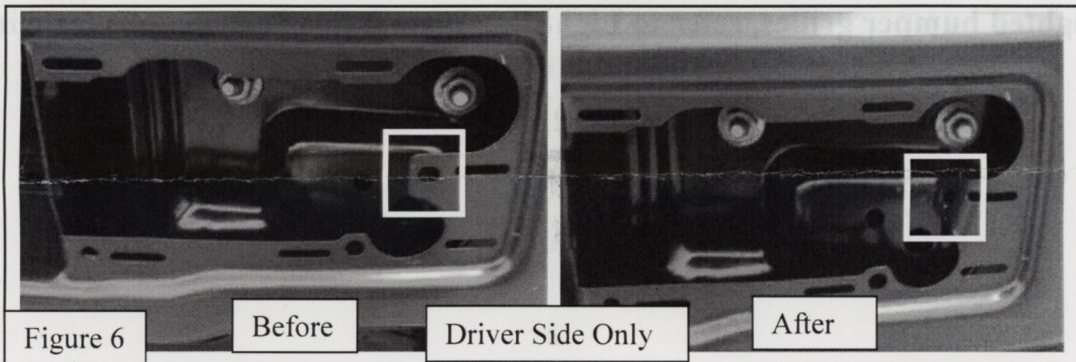
LIMITED 90 DAY WARRANTY

Putco guarantees its Stainless Steel and Aluminum products against defects in workmanship and material for as long as you own your vehicle. All painted products have a 90 day warranty on the painted surface. Any defects resulting from faulty material or workmanship will be warranted by Putco and repaired or replaced at our discretion. Putco assumes no extra labor costs. Damages caused by freight carriers, improper installation, misuse, collision, or neglect will not be warranted by Putco.

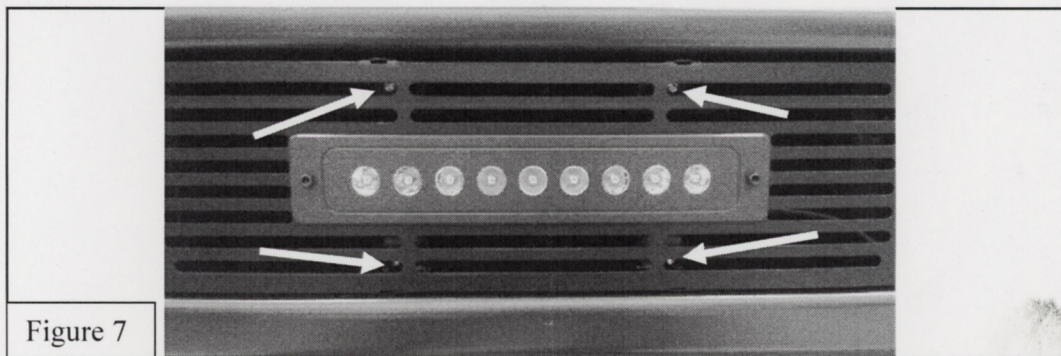
5. (OPTIONAL STEP) Mount license plate onto provided license plate bracket as shown in **Figure 5**. Use supplied 1/4"-20 hardware. Tighten with 7/16" wrench and Philips screwdriver (**Tape on bracket goes toward bottom of license plate**) Once mounted remove backing on tape and stick in location shown in **Figure 5** (Verify holes in bracket line up with lower clips nuts installed in Step 3)



6. Use rubber mallet to bend tab shown in **Figure 6** back far enough to clear grille insert.



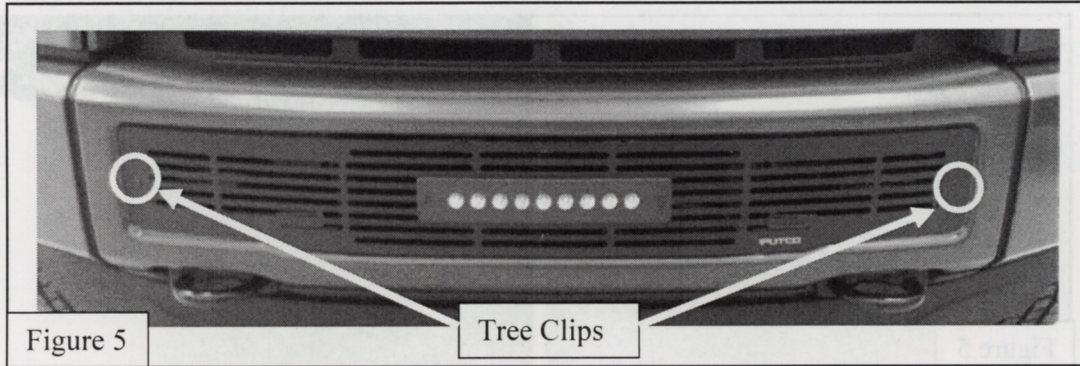
7. Remove tape backing on the back side of the grille. Place center of grille up to the bumper making sure the tape does not stick to the bumper yet. Mount center of grille using the supplied #8 bolts, washers and clip nuts (previously installed in **Step 3**). Refer to **Figure 7**. Tighten using supplied hex wrench. For lighted grilles (**Verify your wire is in a location easily accessible to plug in wire harness**)



LIMITED 90 DAY WARRANTY

Putco guarantees its Stainless Steel and Aluminum products against defects in workmanship and material for as long as you own your vehicle. All painted products have a 90 day warranty on the painted surface. Any defects resulting from faulty material or workmanship will be warranted by Putco and repaired or replaced at our discretion. Putco assumes no extra labor costs. Damages caused by freight carriers, improper installation, misuse, collision, or neglect will not be warranted by Putco.

- Use supplied plastic tree clips to secure ends of bumper grille to the truck (Figure 8). Push grille against bumper and hold for 30sec. This will set the tape.



For lighted bumper grilles, refer to Light Bar Installation Instructions for wiring installation instructions.

LIMITED 90 DAY WARRANTY

Putco guarantees its Stainless Steel and Aluminum products against defects in workmanship and material for as long as you own your vehicle. All painted products have a 90 day warranty on the painted surface. Any defects resulting from faulty material or workmanship will be warranted by Putco and repaired or replaced at our discretion. Putco assumes no extra labor costs. Damages caused by freight carriers, improper installation, misuse, collision, or neglect will not be warranted by Putco.

Light Bar Installation Instructions

Congratulations on your purchase of a high quality PUTCO product. Should you need any application or technical assistance feel free to call us at: 1-800-357-9261
Monday-Friday 8:00 a.m. - 5:00 p.m. (Central Standard Time)
Contact your PUTCO dealer for other quality accessories.

Please read all instructions before installation and to check to see that all parts are included.

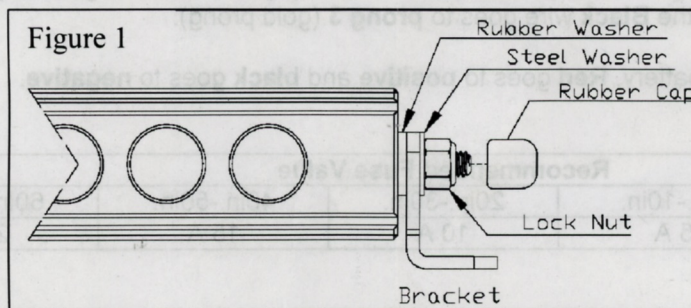
KIT CONTENTS:	
Description	Qty.
Light Bar	1
Wiring Harness	1
Illuminated Switch	1
Long Bracket	2
Short Bracket	2
1/4"-20 Lock Nut	2
Black 1/4" Steel Washer	2
Black 1/4" Rubber Washer	2
Rubber Cap	2

Tools Needed:

- 7/16" wrench
- 3/4 " Drill Bit
- Drill
- File

Light Bar Installation

1. Remove light bar from packaging. Check to see if all parts from above table are included.
2. Remove rubber cap, lock nut, and steel washer from light bar. Leave rubber washer on, this will go between light bar and bracket.
3. Place selected brackets onto light bar, reinstall hardware as shown in **(Figure 1)**. Tighten nut with 7/16" wrench.
4. Place light bar and mark bracket holes in desired location. Remove light bar and drill holes to the size required for your chosen mounting hardware.
5. Mount light bar with chosen hardware in your desired location.

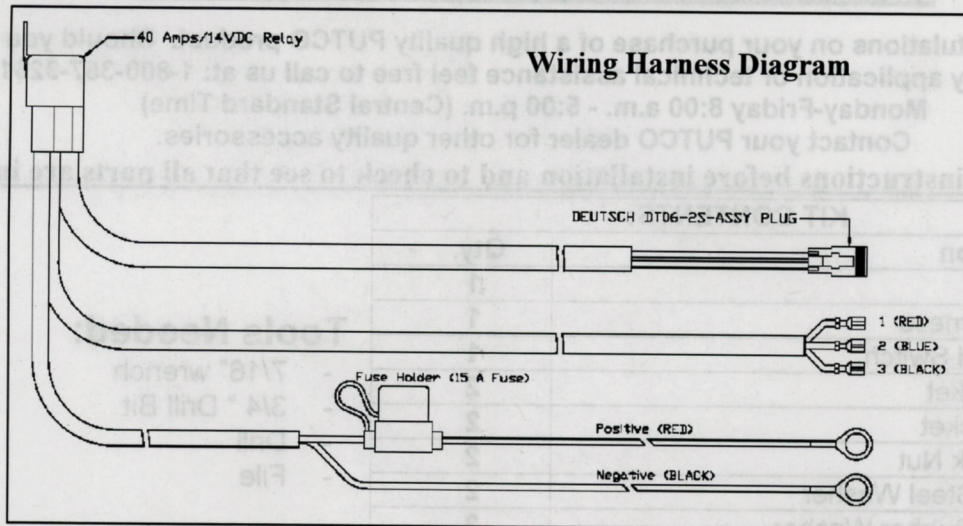


LIMITED 2 YEAR WARRANTY

Putco guarantees its Stainless Steel and Aluminum products against defects in workmanship and material for as long as you own your vehicle. All painted products have a 90 day warranty on the painted surface. Any defects resulting from faulty material or workmanship will be warranted by Putco and repaired or replaced at our discretion. Putco assumes no extra labor costs. Damages caused by freight carriers, improper installation, misuse, collision, or neglect will not be warranted by Putco.

03/17/2013

Wiring Installation



- 1 Remove wiring harness and switch from kit.
- 2 Route wiring harness so that the red and black power cables are routed to the battery, the three switch wires are routed to your desired switch location, and the Deutsch plug is routed to the light bar. Keep wiring away from anything that will get hot.
- 3 Mount relay with desired hardware in a position under hood or in cab that is limited to water exposure.
- 4 Plug male (on the wiring harness) and female (on light bar) Deutsch plug connectors together.
- 5 Drill $\frac{3}{4}$ " hole in desired switch mounting location. Verify there will be enough clearance behind switch to plug in the wires. Notch a small slit in the side of the hole using a file. This will keep the switch from turning.
- 6 Press switch into hole; verify that the notch made in step 5 lines up with the notch on the switch.
- 7 Plug wires into switch. Prongs on switch will be marked 1 through 3. **Red** wire goes to **prong 1**, **Blue** wire goes to **Prong 2**, and the **Black** wire goes to **prong 3** (gold prong).
- 8 Attach power cable to the battery **Red** goes to **positive** and **black** goes to **negative**.

Recommended Fuse Value				
Light Bar Length	6in.-10in.	20in.-30in.	40in.-50in.	60in.-70in.
Fuse Value	5 A	10 A	15 A	20 A

LIMITED 2 YEAR WARRANTY

Putco guarantees its Stainless Steel and Aluminum products against defects in workmanship and material for as long as you own your vehicle. All painted products have a 90 day warranty on the painted surface. Any defects resulting from faulty material or workmanship will be warranted by Putco and repaired or replaced at our discretion. Putco assumes no extra labor costs. Damages caused by freight carriers, improper installation, misuse, collision, or neglect will not be warranted by Putco.

03/17/2013