

C&L Cold Air Intake (96-98 Cobra):

Tools Required:

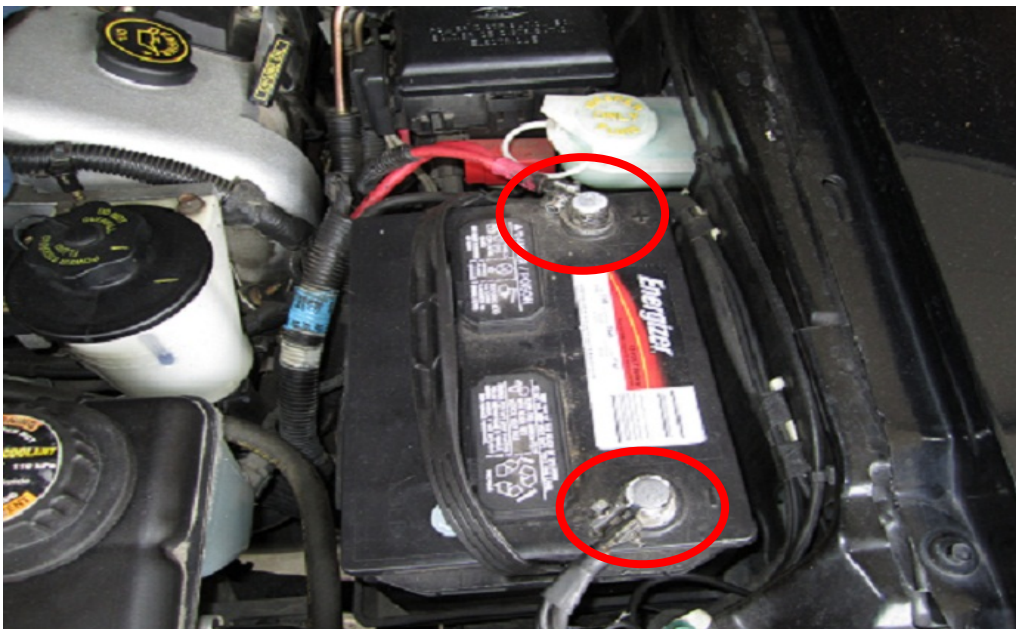
- ✓ Flathead Screwdriver
- ✓ 1/4" Drive Socket Wrench
- ✓ 1/4" Socket
- ✓ Small Adjustable Wrench
- ✓ 8mm Socket or Wrench
- ✓ 10mm Socket

BEFORE

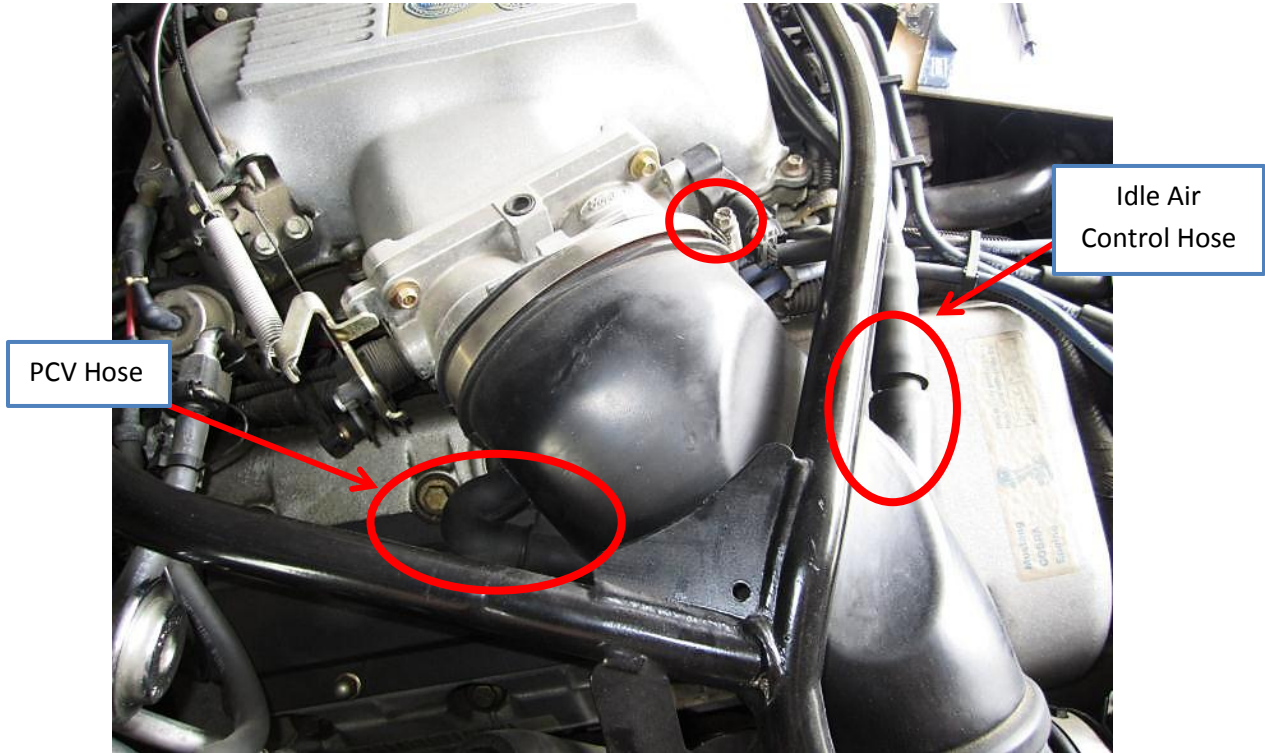


Installation Instructions:

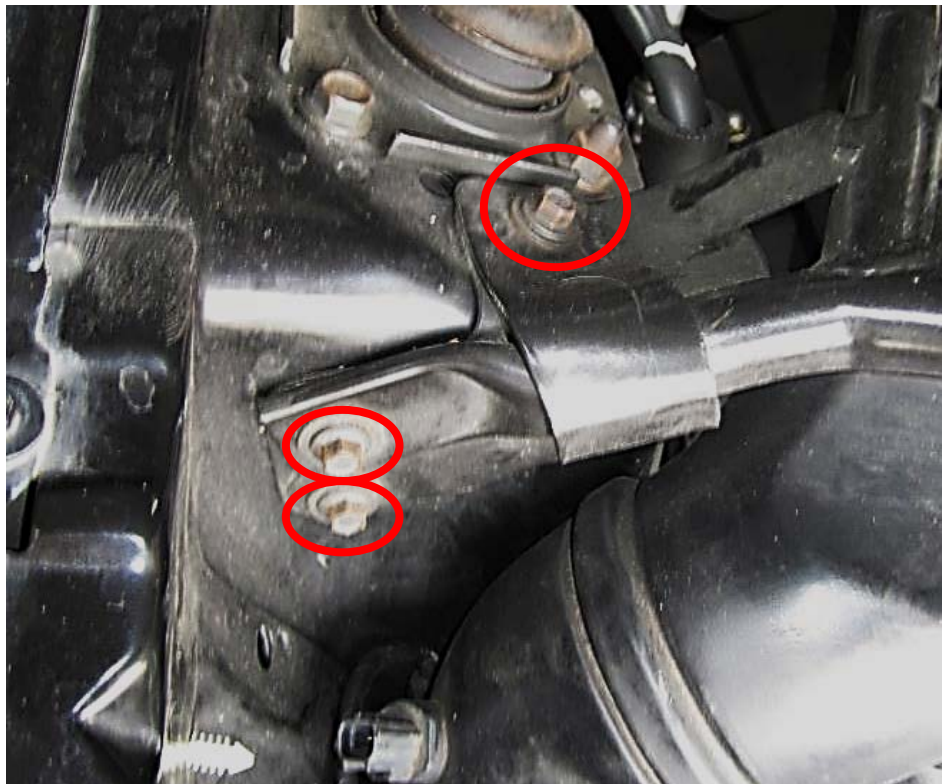
1. Unhook the battery connections using an 8mm socket or wrench.



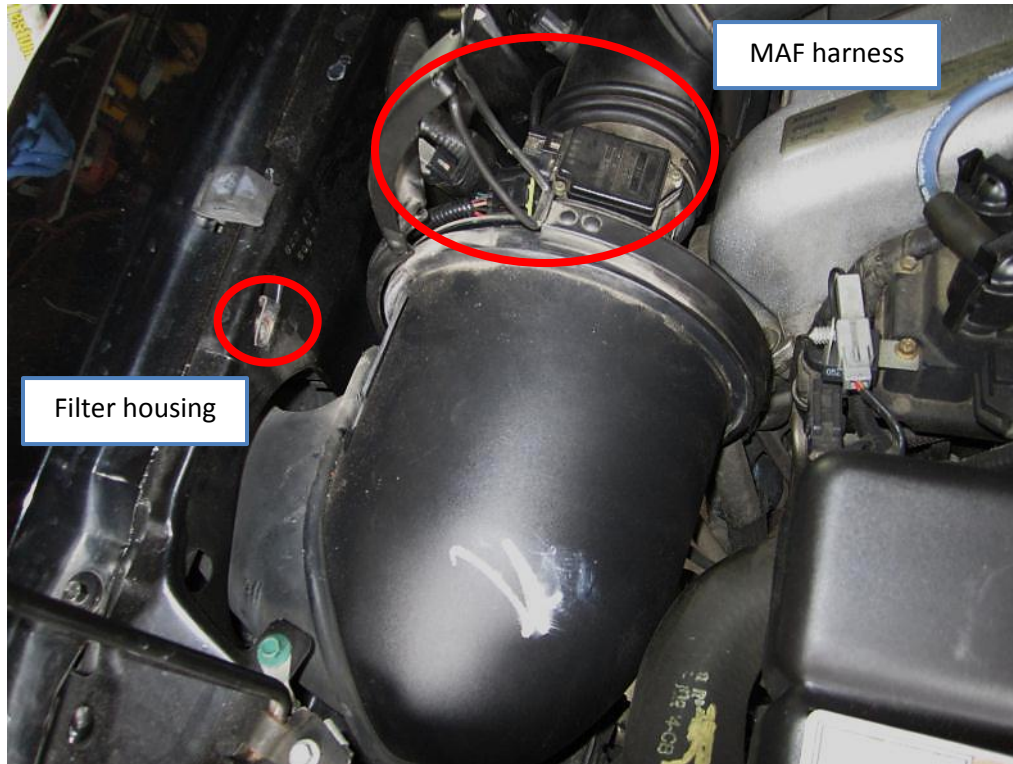
- Using a flathead screwdriver, unclamp the fitting on inlet duct. Detach the PCV hose and idle air control (IAC) hose from the air inlet duct. You will need to remove the PCV hose from valve cover.



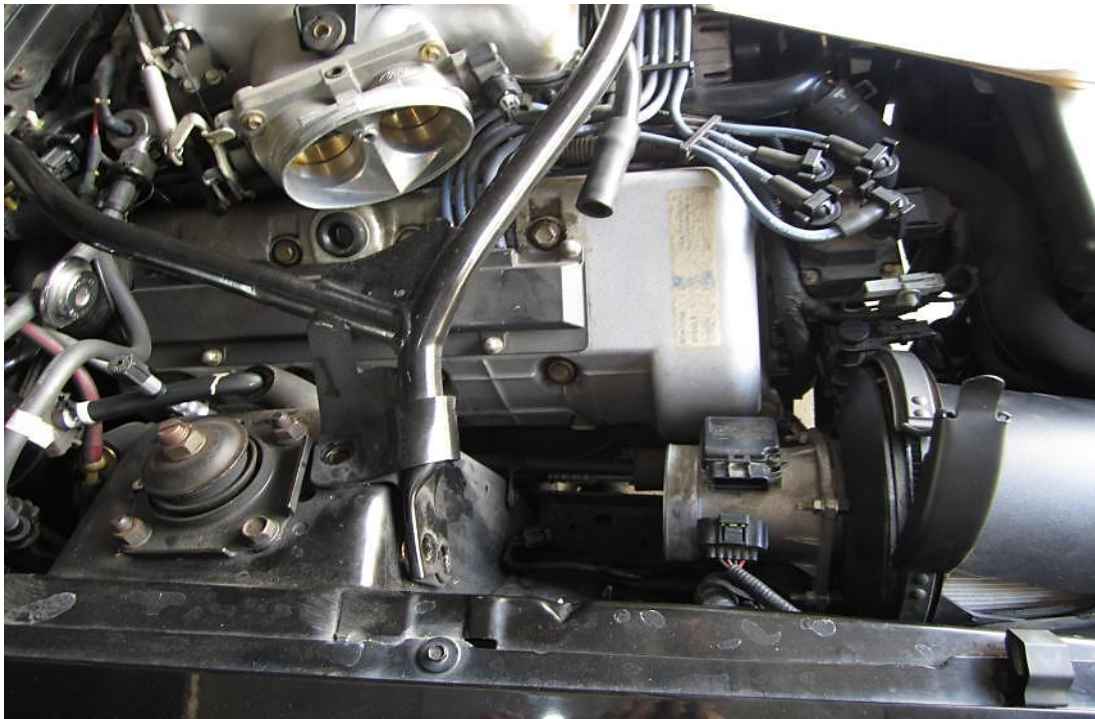
- Unbolt the (3) 10mm bolts that hold the factory strut tower brace to the strut tower. If unbolting and lifting up on the passenger side of the strut tower brace does not provide enough room, you may have to unbolt the other side of the brace as well.



4. Unclamp the air filter and disconnect the MAF harness.
5. Remove the clamp attaching the MAF unit to air inlet duct using a flathead screwdriver.
6. Remove air filter housing bolt using an 8mm socket (bolt itself is not shown but location is circled below).



7. Move the unbolted strut tower brace upwards for clearance to remove factory inlet air duct. While the factory air duct is removed, this may be a good time to clean your throttle body.



8. Unclamp and remove the factory air filter.
9. Pull filter housing upwards and out.



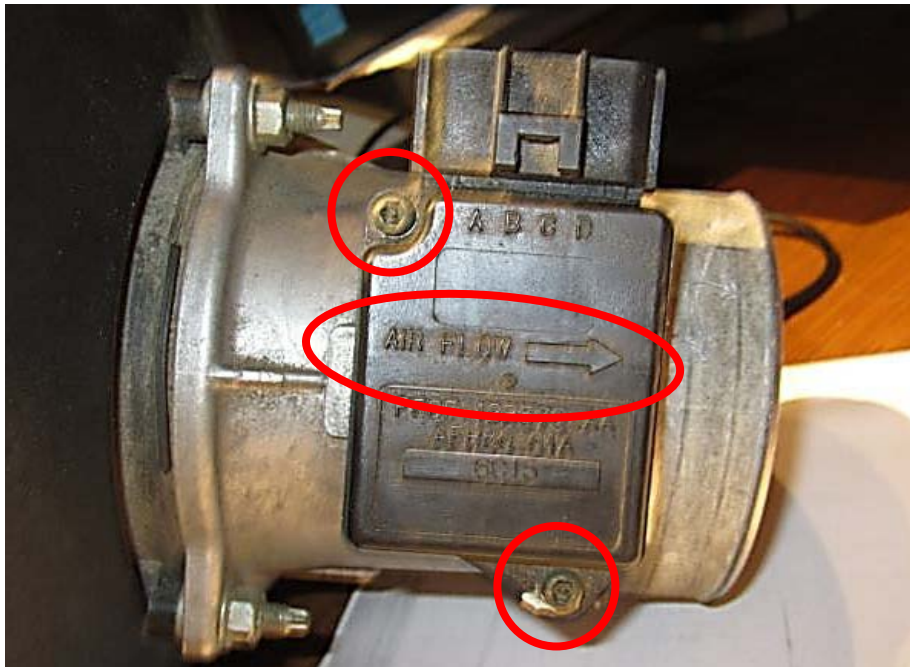
Engine bay with factory system removed



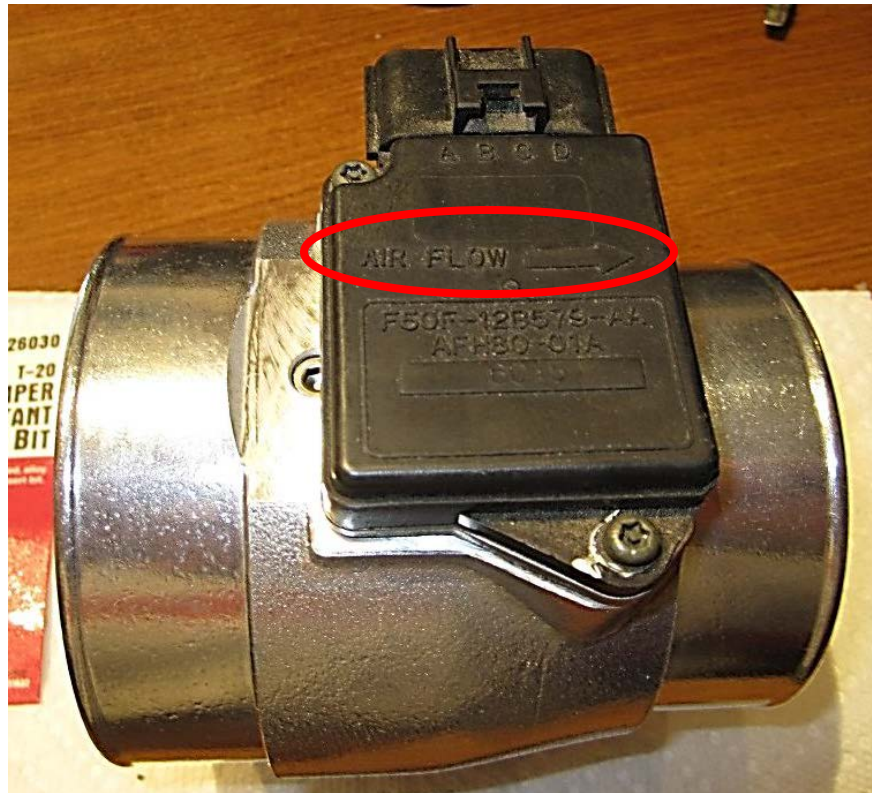
10. Remove PCV hose and air temperature sensor for installation on new air duct. The sensor can be pulled out by hand or by using a flat tip screwdriver to help pry it out.
11. Install the air temperature sensor and PCV hose onto the new inlet duct. Both shown below on stock piping.



12. Using the 1/4" drive, 1/4" socket and supplied T-20 Torx security fitting, remove the (2) screws on MAF sensor. Ensure the O-ring is removed and re-use when installing MAF sensor on new MAF unit. **NOTE:** Flow direction.



13. Install MAF sensor onto new MAF unit. As shown below, filter end is at left; engine end is at right. **NOTE:** airflow direction (towards engine).



14. Attach rubber hose to the throttle body with (2) clamps; snug clamp closest to TB to keep it from moving keeping the other loose for the time being.
15. Move the strut tower brace upward to gain clearance and install the air duct into the rubber hose connecting to the throttle body. Center and adjust the duct as necessary so that there is no contact with strut tower brace or other components. Reinstall strut brace once the TB to duct connection is attached.
16. Slide the other rubber hose onto MAF side of the duct with (2) clamps. Push backwards a little for clearance.

Also shown: Air temp sensor on new duct



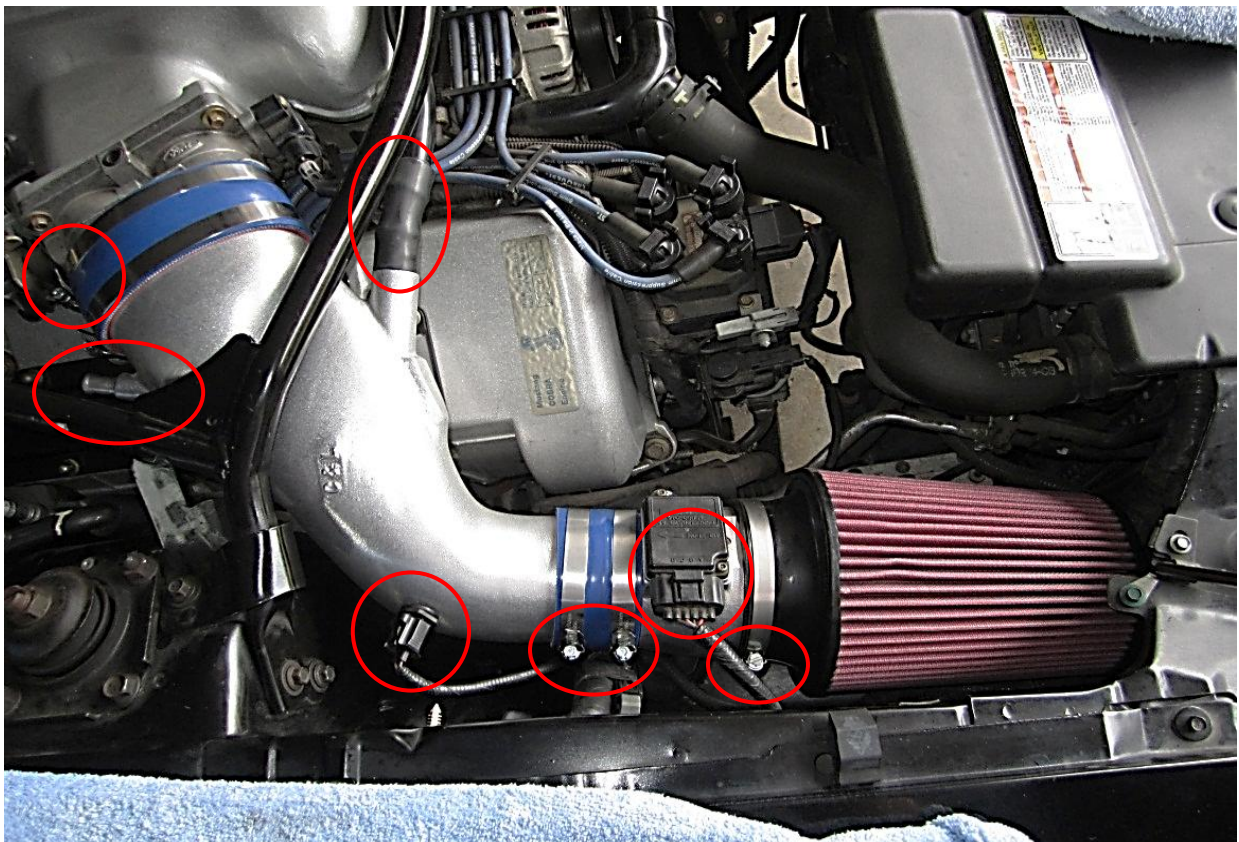
17. Connect the air filter and MAF together and attach both to the air duct. Ensure the MAF sensor is located somewhere in the 12 to 2 o'clock region.

18. Slide the rubber hose forward over the MAF unit.



19. After components are in place, adjust as needed for good fitment and tighten the clamps using a flathead screwdriver. There will be (5) clamps total to tighten everything together.

20. Connect MAF sensor harness, PCV hose, idle air control hose, and inlet air temperature sensor.



21. Install heat shield using the original 8mm bolt.



Installation is now complete!



Installation Instructions written by AmericanMuscle customer Charles Brenegan 4.11.12