

## 2005-2009 Hood Scoop

### Tools Required:

Power Drill  
1/4" & 1/2" Drill Bit  
Trim Removal Tool  
7mm Socket & Ratchet  
Masking/Painters Tape

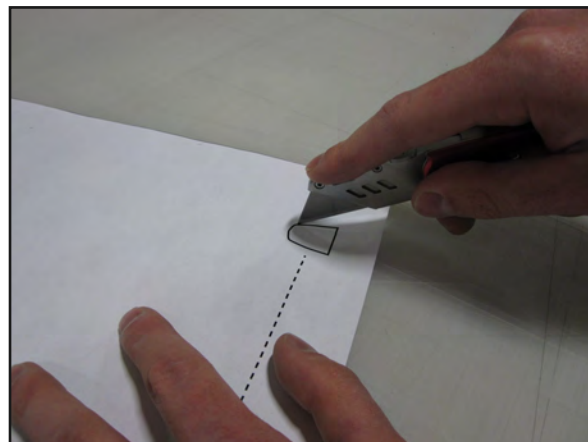
### Contents:

(1) - Hood Scoop  
(1) - Hood Scoop Insert  
(1) - Tape Kit  
(2) - Drill Template  
(4) - Clip Stud/Washer/Nut Assemblies  
(2) - 3M Adhesion Promoter Pads  
(4) - Alcohol Prep Pads



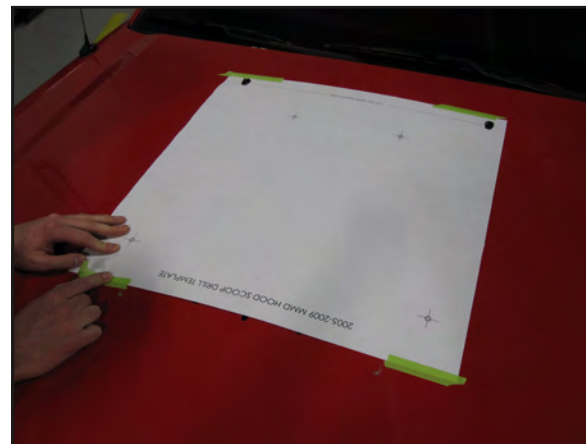
**Be sure to use the Alcohol Prep Pads and 3M Adhesion Promoter Pads as instructed.**

**While not absolutely necessary, it is recommended to remove the hood from the vehicle before installing the Hood Vents to prevent unwanted debris in your engine bay and on your car.**



#### STEP 1:

Before beginning, remove the underhood insulation by releasing the plastic retaining clips. Using a sharp knife, carefully cut out the washer nozzle holes from the template (on the outside of the black lines) as shown below.



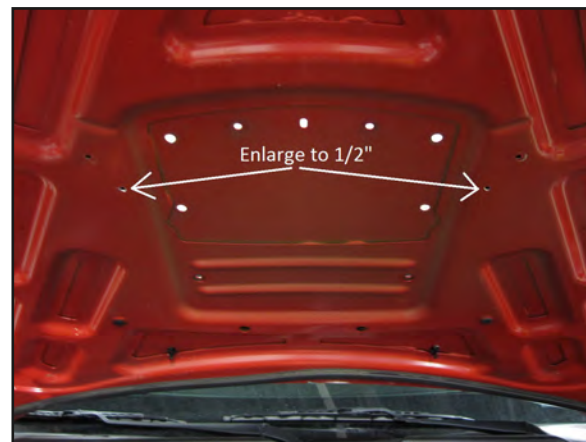
#### STEP 2:

Place the template on the hood over the washer nozzles and tape the edges down with masking tape.



#### STEP 3:

Center Punch the 4 crosshairs on the template then drill using a 1/4" drill bit.



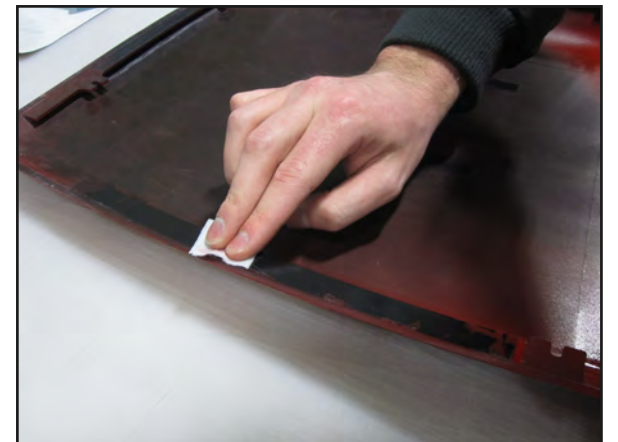
#### STEP 4A:

From the underside of the hood, drill out the front two 1/4" holes to 1/2".



#### STEP 4B:

Note: If leaving the hood on the car, have a partner hold a shop-vac or similar next to the bit to prevent any metal shavings from landing in the engine bay.



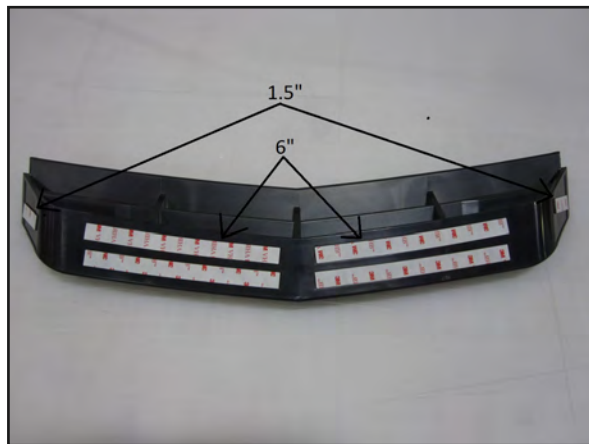
#### STEP 5:

Thoroughly wipe down the tape ledges on the underside of the scoop using the supplied Alcohol Prep Pads, followed by the 3M Adhesion Promoter.



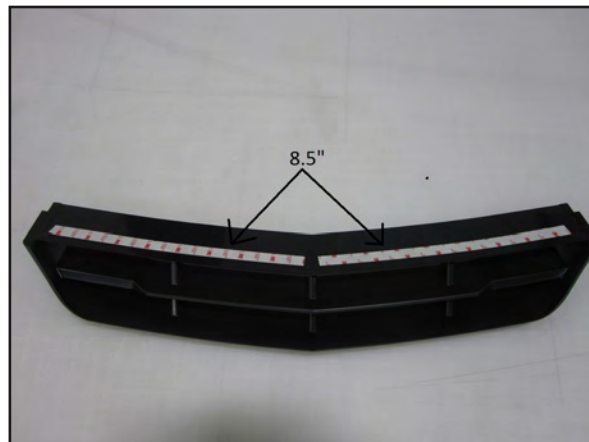
#### STEP 6:

Place the 3M tape from the tape kit on the underside of the scoop as shown, along with the 4 Clip Studs.



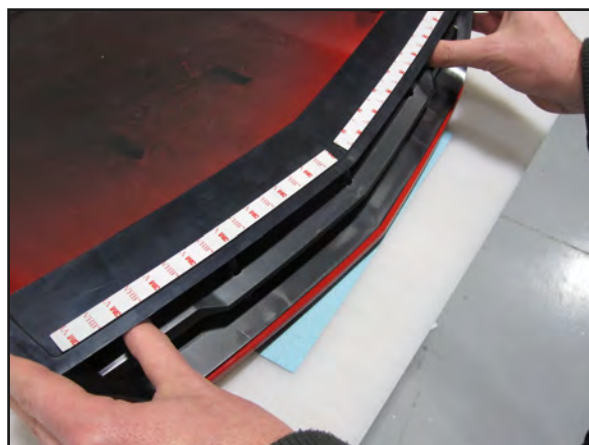
**STEP 7A:**

Thoroughly wipe down the tape indents on the insert using the supplied Alcohol Prep Pads, followed by the 3M Adhesion Promoter.



**STEP 7B:**

Place the 3M tape from the tape kit on the insert as shown above.



**STEP 8:**

Remove the backing from the 3M tape on the top of the insert and install it into the scoop body. Place the front edge of the insert in first then firmly press down to fully seat the adhesive tape.

**STEP 9:**

Thoroughly wipe down the tape indents on the insert using the supplied Alcohol Prep Pads, followed by the 3M Adhesion Promoter. Place the 3M tape from the tape kit on the insert as shown below.



**STEP 10:**

Open the hood and install the washers/nuts onto the studs using a 7mm 1/4 drive socket as shown.

**STEP 11:**

Once the hardware is tightened and the scoop is properly aligned on the hood, firmly press down on the scoop to fully seat the adhesive tape. Replace the hood insulation removed in Step 1 to complete the installation.



**INSTALLATION GUIDE:**

**2005-2009 Hood Scoop**

Item # 71323