

BBK 70mm Throttle Body (05-10 V6)

Tools Required:

- ✓ 1/4" Ratchet
- ✓ 1/4" Extension
- ✓ 8mm Socket
- ✓ 10mm Deep Socket
- ✓ T-20 Torx Screwdriver
- ✓ 5mm Allen Wrench
- ✓ #5 Hex Screwdriver
- ✓ Blue Thread locker
- ✓ Needle nose pliers
- ✓ Small flat head screwdriver

Protective Equipment Required:

- ✓ Mechanics Gloves
- ✓ Eye Protection



Installation Instructions:

1. Be safe and put on your gear, gloves and eye protection! Remember as with any car part, be gentle with OEM and aftermarket parts while installing; property damage may occur.
2. Disconnect the negative battery terminal. You are dealing with electronics and do not want to damage any other components.



3. Disconnect your air intake hose from the stock throttle body by loosening the hose clamp. Removing the air intake completely would be ideal for more working space.



4. Unplug the throttle body electric motor and TPS wires. You can do this by sliding the red tabs back, squeezing the grey tabs that will be exposed and pulling back carefully.



2005 V6 ONLY: If you have the (2) coolant hoses that route through the stock throttle body, disconnect the hoses and bypass them, clamping down the supplied U-shaped tube.

5. Unbolt and remove the (4) bolts connecting the throttle body to the manifold using an 8mm socket.



6. Using the T-20 Torx, remove the motor housing, plastic capped spring (careful, spring is under tension) and TPS from the stock throttle body. DO NOT REMOVE THE METAL CYLINDER. The TPS will need to be pulled straight off to avoid cracking the plastic housing.



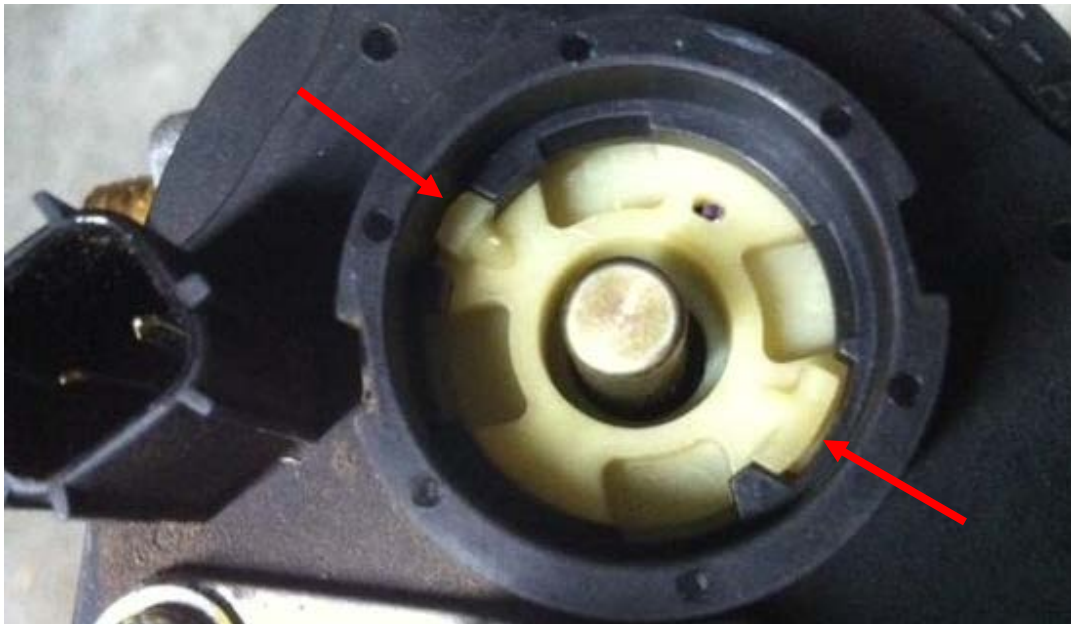
7. Using a screwdriver, gently pop the circular cap off the motor housing.



8. Place the plastic capped spring over the BBK throttle body shaft and line the pigtail hook into the catch slot. Do not place the removable cap on yet.



9. Install the OEM motor housing onto the BBK throttle body, over the plastic capped spring and tighten using blue thread locker and the original screws.
10. Using either needle nosed pliers or a small flathead screwdriver, rotate the plastic capped spring counter-clockwise (~180 degrees) until the cap pops up into a locked position.



11. Replace the removable cap.

12. Install the TPS onto the BBK throttle body using with blue thread locker and the original screws. Be aware that you install it without twisting.



13. Ensure that the throttle body does not bind, but closes on its own by pushing the flap.

14. Using a #5 Hex screwdriver, install the BBK throttle body onto the intake manifold using the supplied screws and some blue thread locker.



15. Re-install the air intake system. Remember to plug back in any sensors you may have unplugged!



16. Plug the throttle body sensors back in and remember to push the red tab back into the locking position.

17. Re-connect the negative battery cable.

18. Perform a quality control check to ensure that all connections are in place, locked in, tight, and all tools/parts are removed from the engine bay area prior to starting your Mustang.

19. Start up your Mustang and enjoy the ride!