

Saleen 2010 to 2012 S281/S302 Front Grille - Basic Installation Sheet

STEP 1: Open the hood and remove the upper air shield to access the back of the grille*

*Removal of the front fascia is optional and may make the grille installation process easier.

STEP 2: Disconnect each fog lamp connector (2 per grille).

STEP 3: Carefully use a flat blade screwdriver to release the 10 tabs holding the upper grille to the fascia. Four tabs are located along the bottom, and three on each side of the grille near the headlamps. Once all tabs are released, pull the grille forward and away from the car to remove.



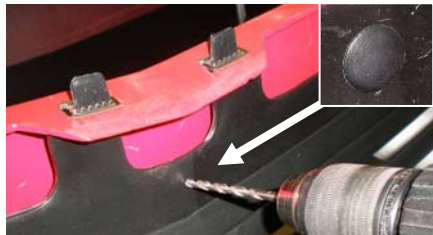
STEP 4: Slide the new grille into place on the front fascia. The grille will have eight tabs that will be inserted into the old existing tab locations. Make sure the grille is fully seated in place.



STEP 5: Once the grille is in place, apply a small amount of pressure to the grille (to hold the grille in place) while sliding one provided metal clip on to each tab. There will be two sizes of clips, the larger clips are used for the bottom tabs and the smaller clips will be used for the side tabs. Make sure each clip is installed onto the tab as far as it will go and the teeth are pointing away from the grille (the clip should be easy to slide on, but difficult to remove).



STEP 6: Use a drill and a 3/16" drill bit to drill a hole through the bottom of the grille and into the top of the front fascia. The hole should be located between the two center tabs and as far forward as possible. Once the hole is drilled, install the one push tree clip provided. The tree will be used to secure the bottom to the grille to the top of the fascia.



STEP 7: Re-install the front fascia if removed and re-attach the upper air shield.

Thank you for choosing the Saleen 2010 to 2012 Upper Grille for your Mustang. If you need additional installation assistance or a more detailed installation manual, please contact Speedlab at parts@saleen.com or (800) 888-8945.