

Heartthrob Muffler-Delete Axle-Back Exhaust (11-12 GT):

NOTE: This installation is rather simple. Mufflers can be maneuvered out without having to remove clamps on H-pipe to the over-the-axle pipes; though doing so can make installation much easier.

Warning:

If you decide to install this exhaust at home, be warned that “bumper” jacks are intended for emergency use only. The use of frame contact jack stands in conjunction with a floor jack as main support is highly recommended instead to minimize accidental dropping of a vehicle while the installation proceeds

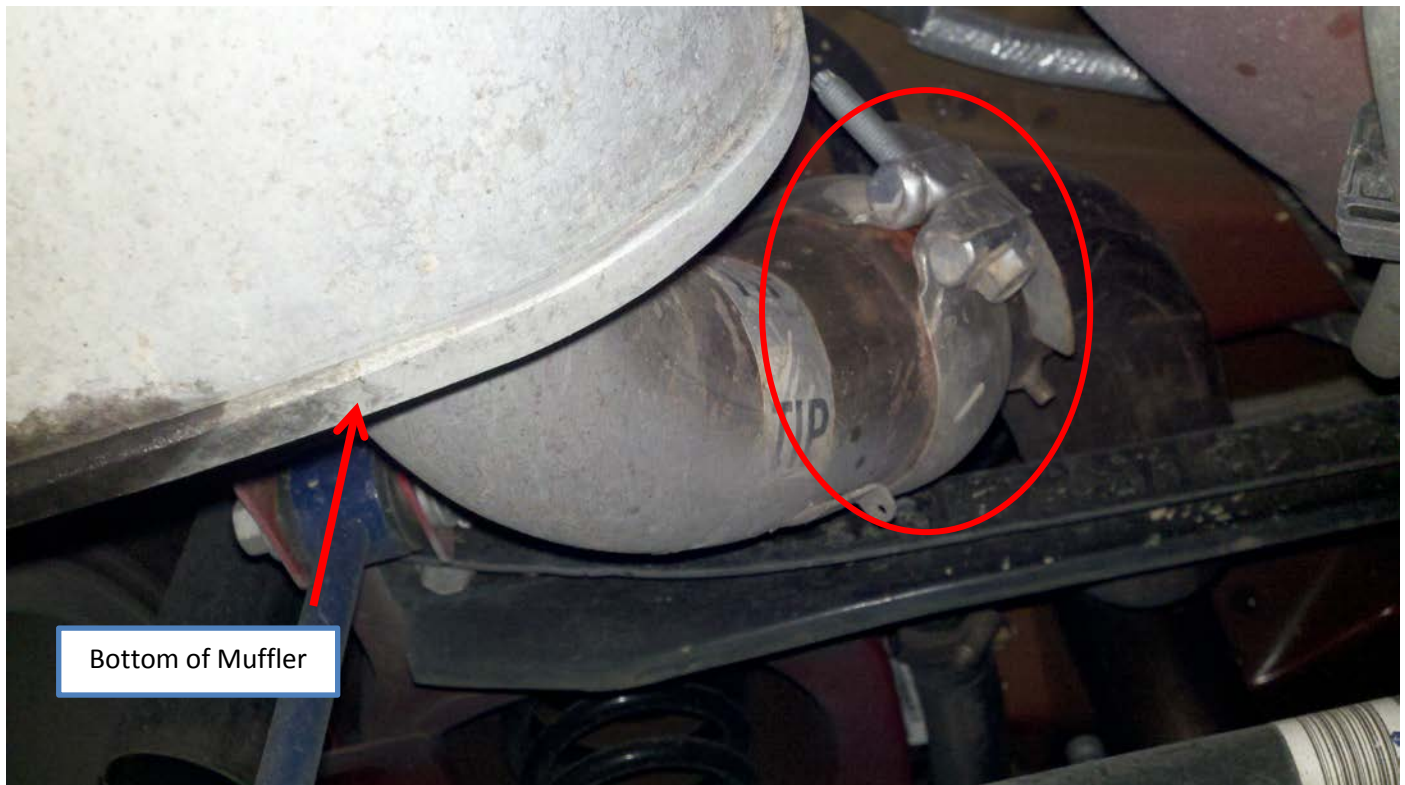
Tools List:

- ✓ Ratchet w/ extension
- ✓ 9/16 socket (stock exhaust)
- ✓ 5/8 socket (Heartthrob exhaust)
- ✓ WD-40
- ✓ Flashlight
- ✓ Car ramps are recommended for home install
- ✓ Torque wrench (20.65-23.6 ft/lbs)

Installation Time: Approximately 1 hour

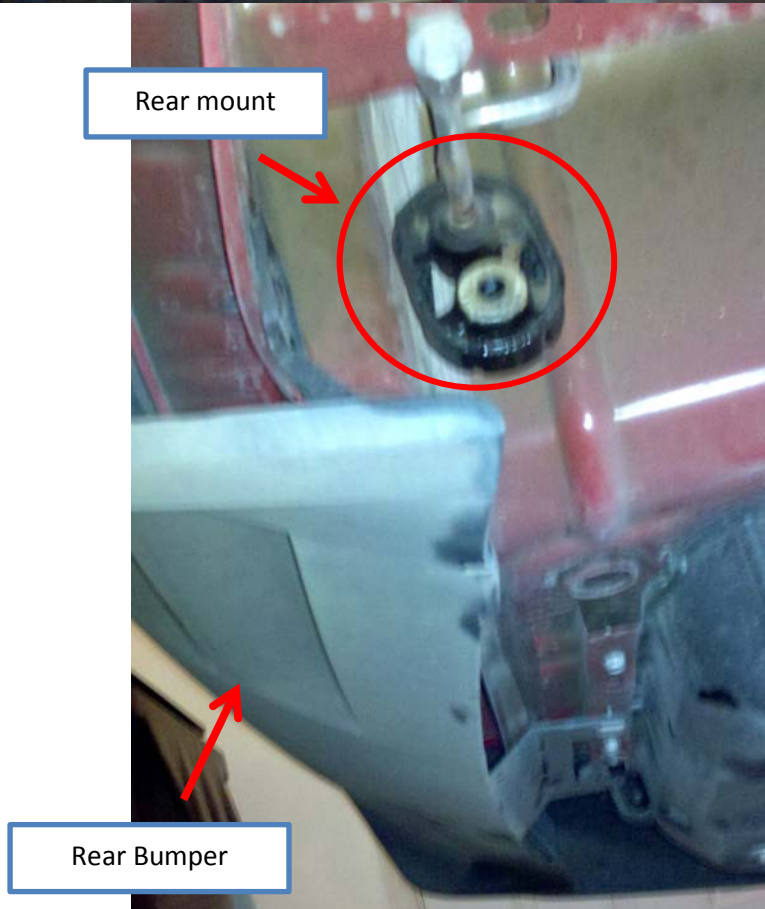
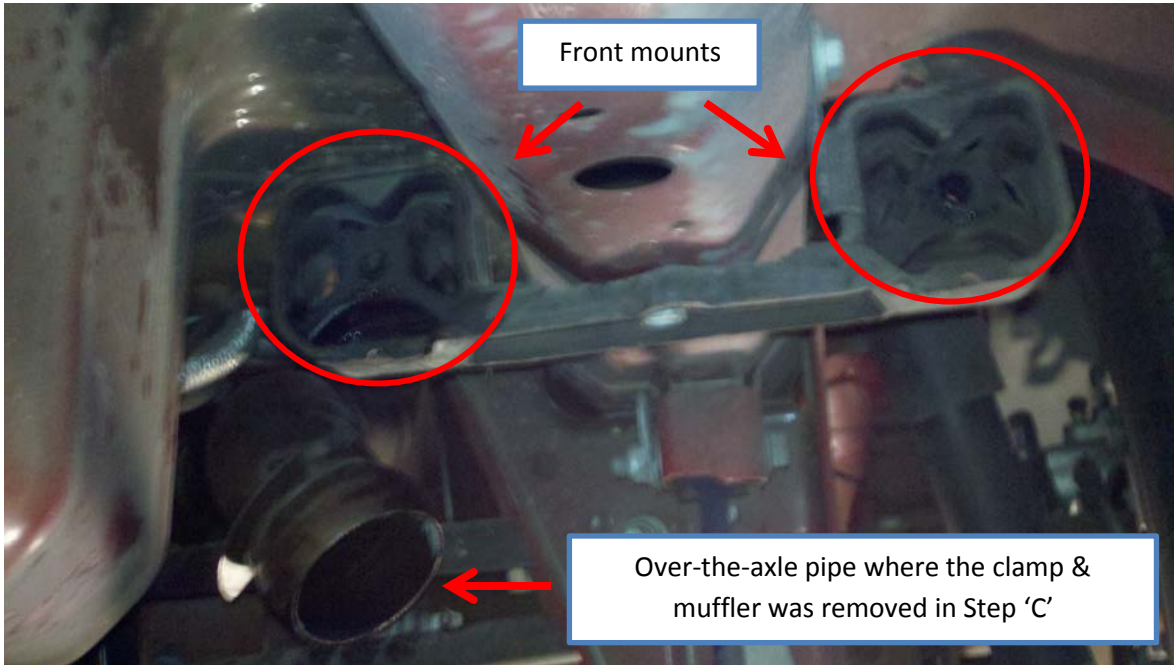
Removal of stock exhaust:

- A. Suspend the rear end of the vehicle for comfortable movement underneath.
- B. Disconnect the negative battery terminal.
- C. Remove the clamps holding the mufflers to the over-the-axle pipes using a 9/16 socket and ratchet (see photo).



- D. Spray all front and rear rubber hanger mounts (6 mounts total; 3 per side) with WD-40 for easier removal.
- E. Maneuver each muffler out of the (3) rubber hanger mounts, starting with the rear hanger mount first. Push the mufflers toward the front of the car and then out of the (2) remaining hanger mounts.

NOTE: The mufflers may be difficult to maneuver out of the rubber hanger mounts. If you're unable to remove the mufflers, removal of the clamp on the over-the-axle pipes to the converter H-pipe is recommended. This will allow movement of the over-the-axle pipes for easier removal and install of the exhaust.

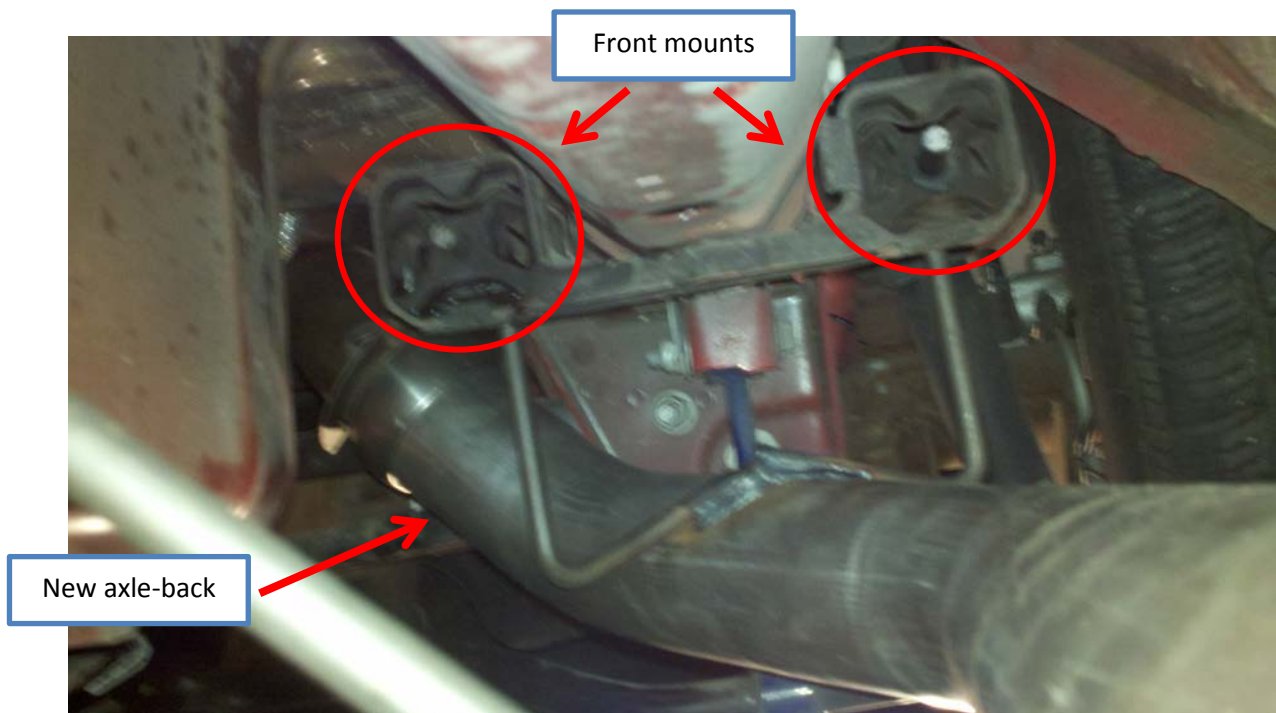


Installation of Heartthrob Axle-back:

- A. Loosen the rounded clamps provided with Heartthrob exhaust and place them on the pipes before attempting to attach them to the over-the-axle pipes.
- B. Install the driver side exhaust by inserting the wire hangers into the rubber hanger mounts, starting with the front mounts first. Maneuver the pipe into place with the over-axle-pipe and then insert the third wire hanger into the rear rubber hanger mount.



NOTE: Do not over tighten; the clamps will be torqued at the end of the procedure. Tighten the clamps using the 5/8 socket to help prevent too much movement.



- C. Repeat same install for the passenger side exhaust.
NOTE: If the clamps were removed holding the over-axle-pipes and the converter H-pipe, they can be put back together at this time.
- D. Install the tips on the ends of the new exhaust by placing the flat tip clamps on the tips and sliding them onto the pipes.
- E. Tighten the clamps, making sure that the tips don't shift and become crooked.
- F. Check for clearance of the frame, body, suspension components and all brake and fuel lines.
- G. When you are satisfied with how the mufflers hang, tighten the clamps and torque the rounded clamps to 20.65 to 23.6 ft/lbs. Make sure clamps create a good seal between exhaust and over-axle-pipes to prevent any leaks. Check that the clamps also prevent movement of either pipe.
- H. Reconnect the negative battery terminal and lower the car off the jack/jack stands.
- I. Turn the car on and look for any leaks that may be present in the exhaust. If any are suspected, locate the cause and address accordingly (i.e. tightening clamps, repositioning pipes).

FINISHED PRODUCT!!



Installation Instructions written by AmericanMuscle customer Cody Rider 11.25.11