

## Replacement Front Wheel Bearing and Hub Assembly w/ ABS Ring (94-04 All)

Time Required: 30 Min. per wheel

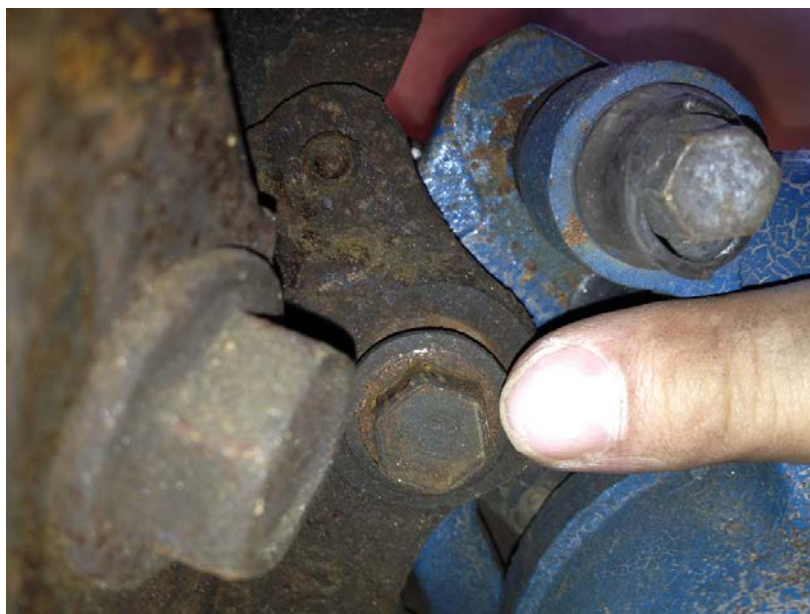
Tools Required:

- |                 |                          |
|-----------------|--------------------------|
| ✓ Jack          | ✓ Ratchet                |
| ✓ Jack stands   | ✓ Flat head screw driver |
| ✓ Wheel chocks  | ✓ Hammer                 |
| ✓ 15mm socket   | ✓ Lug Wrench             |
| ✓ 36mm socket   | ✓ Old piece of a 2x4     |
| ✓ Torque wrench |                          |

1. Make sure the car is in park or in gear. Wheel chock the back wheels. Jack front of the car up. Use the Lug nut wrench remove the lug nuts on the wheel and remove the wheel and place to the side.



2. Use 15mm socket to remove the brake caliper (2 bolts on back of caliper)



**3. Place brakes caliper either on a cinderblock or hang it the proper height so not to damage the brake line).**



**4. Remove the rotor, Place it to the side**







**5. Take flat head screwdriver and easily tap it in around the dust cover with the hammer to remove it from the hub (the dust cover is a onetime use item, so you will have to replace it with a new dust cover each time)**





**6. Using the 36mm socket remove the hub nut (this is a onetime use hub nut) Remove wheel hub**



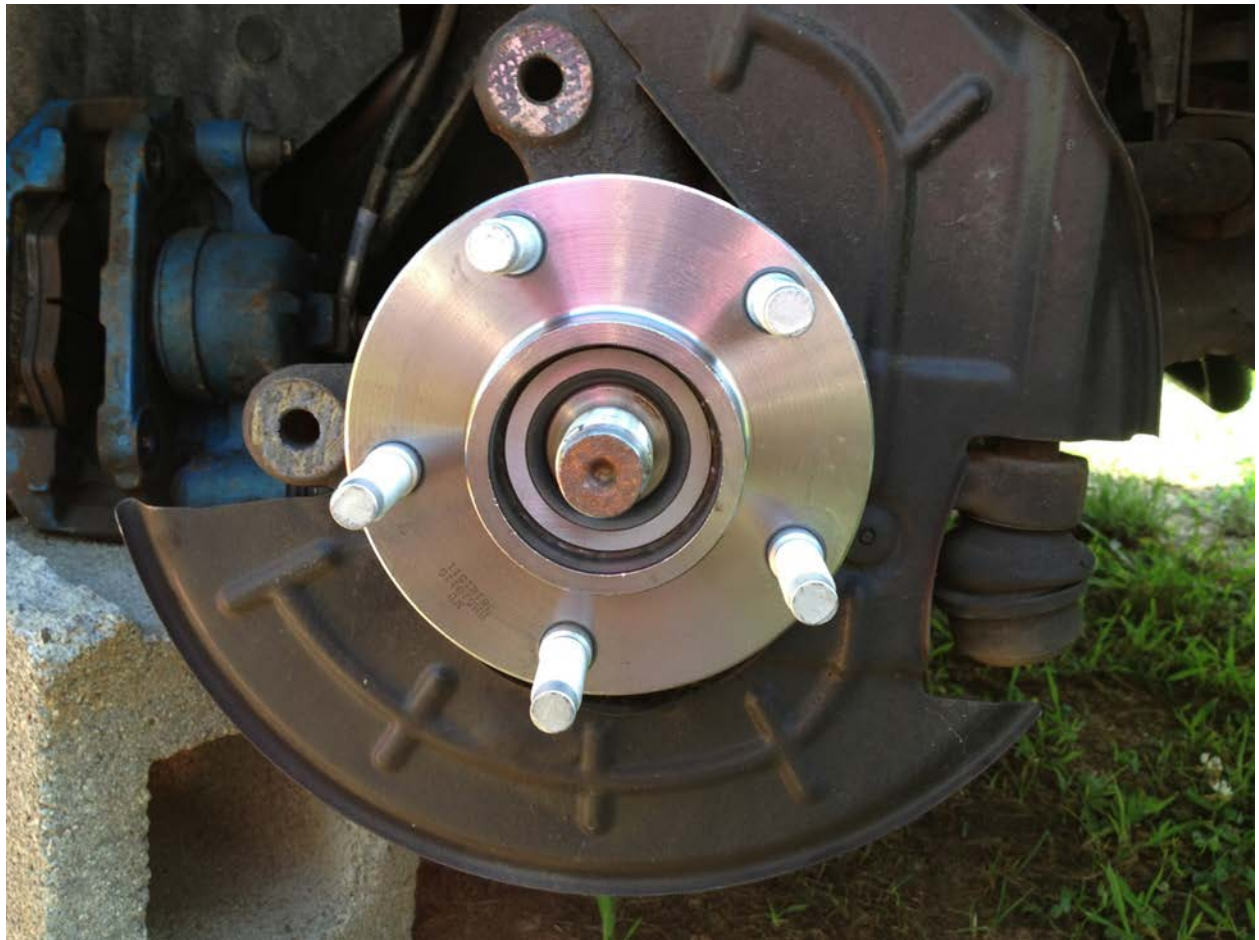
**7. Clean the spindle on the car with a rag. Lubricate the spindle with wheel bearing grease**





**8. Place the new wheel hub on to the spindle , Take the new hub nut and start it by hand. Take the 36mm socket and torque wrench and tighten the new hub nut to the torque of 221 to 295ft-lbs**









9. Take new dust cover and center it on the hub.



10. With a small piece of 2x4 place it on the edge of the hub and easily tap with a hammer all the way around the dust cover to get it started (use wood so it does not bend or damage the dust cover)







**11. Replace the rotor back onto the new hub assembly you have just installed**



**12. Replace the rotor back onto the new hub assembly you have just installed.**



**13. Take the brake caliper and slowly slide over the rotor line up and start the 2 bolts that hold the caliper into place. Torque the bolts to (1997 and earlier) 65ft-lbs (1998 and later) 23ft-lbs Re-install the wheel and torque lug nuts to 85 to 105ft-lbs. Remove the jack stands. Lower the car.**



**Written by AmericanMuscle Customer Jay Meyers 6.23.2013**