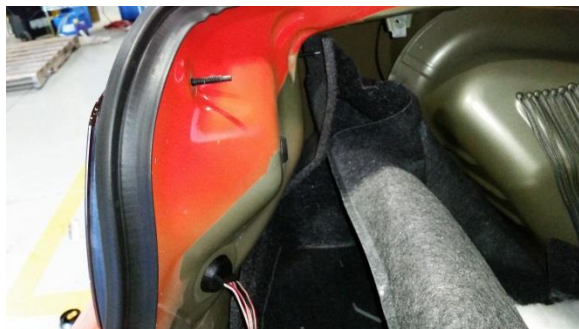
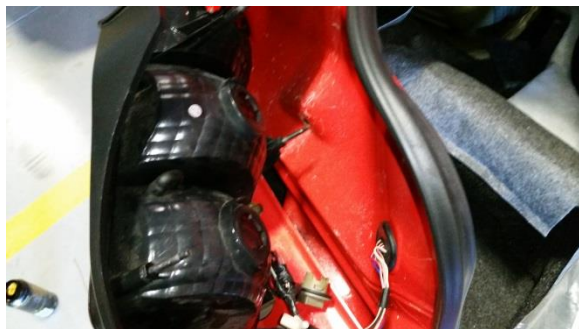


Installation Instructions for Raxiom LED Taillight Conversion Kit (05-09 Mustang)

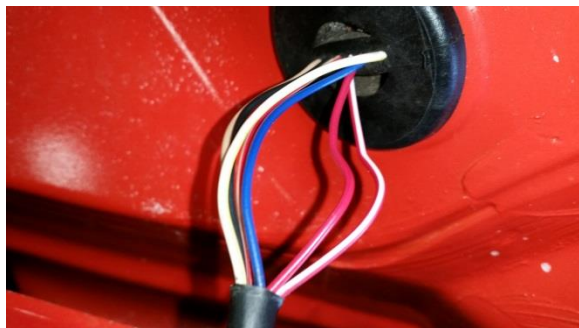
STEP 1. Remove the cover panel inside the trunk to expose the back of the taillight.



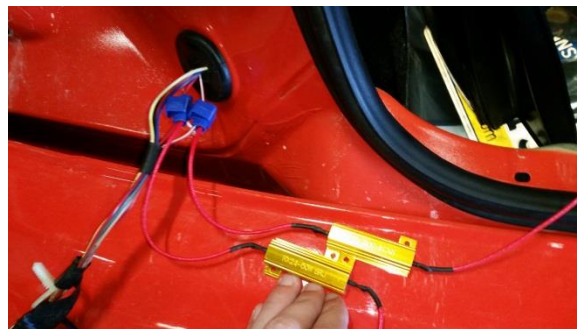
STEP 2. Remove the taillight from the vehicle and uninstall the harness from the housing.



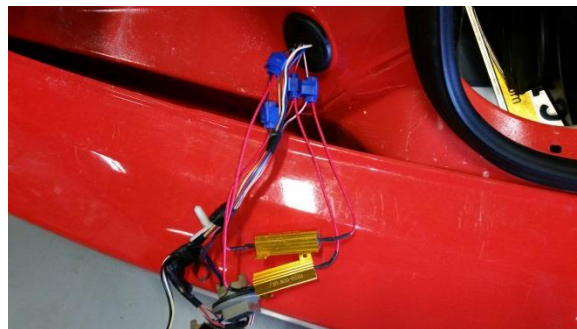
STEP 3. Identify the signal wires (red / white) and ground wire (black) after the harness connector.



STEP 4. Using the supplied wire splice connectors, wire one side of each load equalizer into each signal wire.



STEP 5. Using the other two supplied wire splice connectors, wire the other side of the load equalizers to the ground circuit.



STEP 6. Install the LED bulbs into the factory harness and reinstall the taillight housing to the vehicle.



**Note the bulbs are can be installed into the socket, but will only functions one way. If they do not turn on, flip the bulbs 180 degrees and retest.*