

Smoked Projector Headlights Installation

Tools:

- ✓ Screwdriver
- ✓ Painter's Tape (Optional)



Procedure:

- 1 – To avoid scratching your paint removing your stock headlights, apply Painter's Tape below the headlights on the bumper.
- 2 – The stock headlights will have two pins that hold them in place. These pins are located right above the headlight, towards the back.



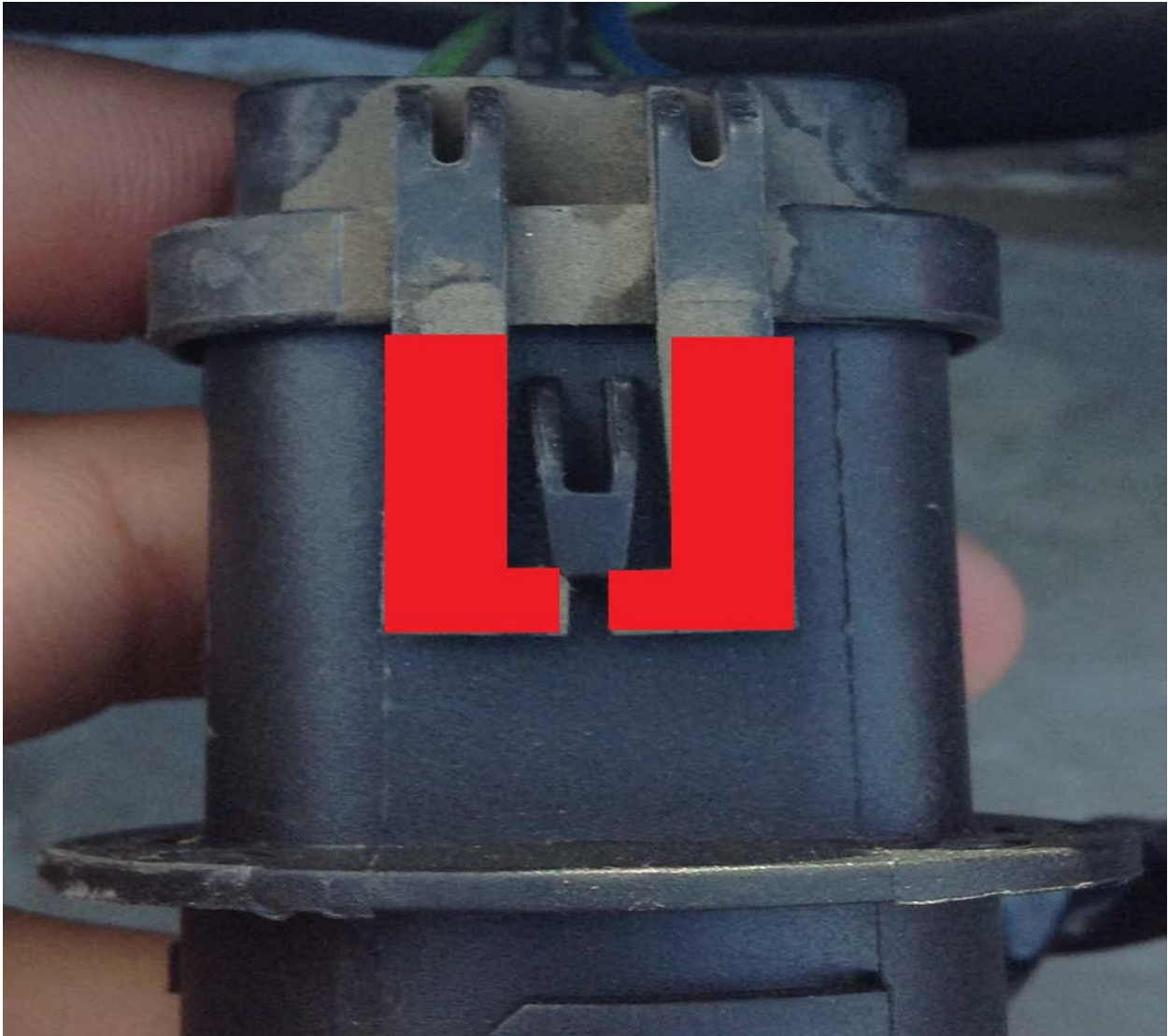
Place these pins (total of 4) to the side as you will need them for your new headlights.

3 – Once you pull out the pins, gently pull out the stock headlights, pulling towards you. A little wiggling may be required.

4 – You will see two wires, the head light on the right and the signal light on the left. Turn the cap that the head light is in and pull it out. The head light should pull out with the cap and light bulb. A little wiggling may be required.

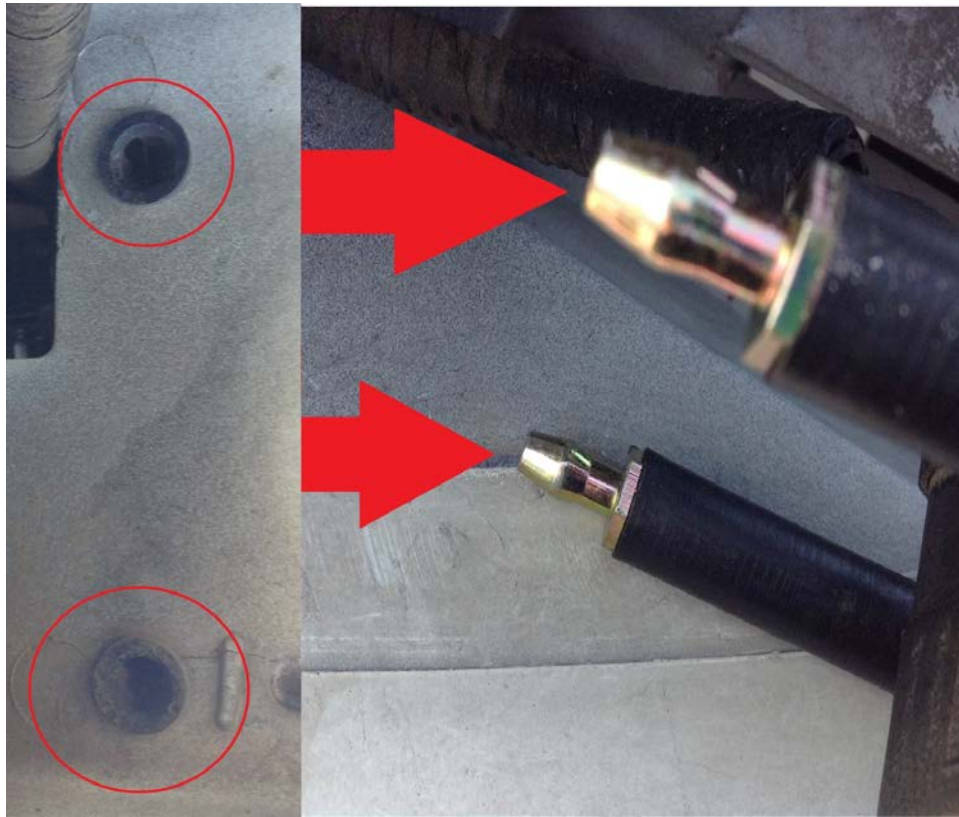
5 – Turn the signal light and pull out.

6 – You will need to remove the head light from the plug. To do this, grab the head light, lift the tab securing the headlight with a screwdriver while pulling it out.



7 – Time to place your new Smoked Projector Headlights! Start by inserting the signal light into the headlight. Turn cap to secure. Follow by inserting head light cap into the plug on the headlight assembly.

8 – Slowly guide the headlight inside the socket. Use the holes and inserts to align the headlight in.



When you see the black insert where the pins are put in, you can insert the pins to secure the headlight.



Try pulling out the headlight to make sure it's secure.

9 – Return to step 2 for inserting second headlight.

10 – The screw on the left is the high beam adjustment. The screw on the right is the low beam adjustment. (Reverse order for the right headlight).



To adjust the vertical alignment of the light intensity to your preference, use a screwdriver to turn the silver screw. Pulling out the headlight will possibly be necessary.

Enjoy the new look to your Mustang!

