

4



Once the louver is centered on the rear glass, press down firmly on all brackets to seat the adhesive tape. Remove the nuts from the brackets and carefully remove the louvers from the vehicle. Using the supplied 3M Super Silicone Sealant, apply a thin bead around each bracket as shown to seal them to the glass. The sealant will skin over in 20-30 minutes, but will not fully cure for 24 hours. At this point, leave the brackets on the rear window glass for 24 hours and move on to Step 5 once the sealant has fully cured.

5



Once the sealant has cured, install the louver onto the brackets using the supplied washers and closed end nuts. Use an 8mm socket and $\frac{1}{4}$ drive ratchet to install the nuts just past finger tight. Do not over tighten the nuts as you will risk damaging the studs.

MMD
MODULAR MUSCLE DESIGN

1994-2004 Rear Window Louvers

Contents:

- (1) Rear Window Louver
- (9) Mounting Brackets
- (2) Alcohol Prep Pads
- (2) 3M Adhesion Promoter
- (1) 3M Super Silicone Sealant

Tools Required:

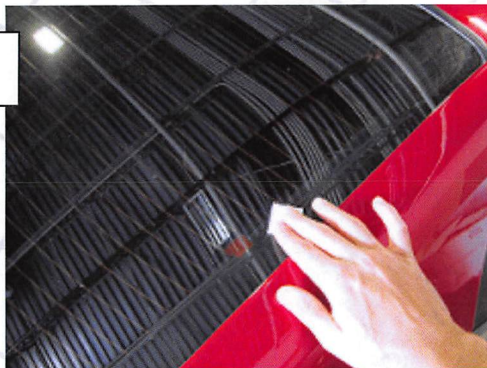
8mm Wrench or Socket

Note: Before beginning installation, make sure the rear window is cool to the touch and thoroughly clean the rear window glass. This will ensure the adhesive tape adheres to the glass properly.

Read Installation Instructions fully before beginning this install.

Cleaning: To clean your rear window glass, simply remove the 8mm nuts/washers and remove the louver from the vehicle. Remember not to over tighten the nuts when re-installing the louver.

1



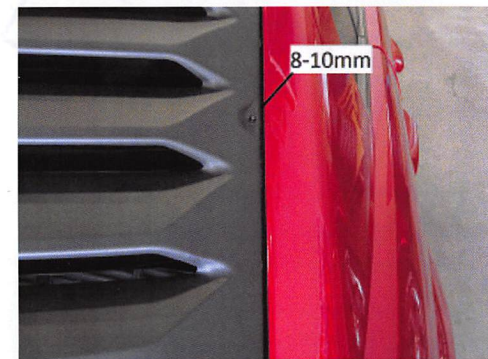
Using the supplied alcohol prep pads, wipe down the outer edge of the glass where the brackets will adhere. Once the alcohol has dried on the glass, repeat this process using the included 3M Adhesion Promoter.

2



Lay the louvers upside down on a surface that will not scratch the finish. Install the 8 brackets as shown and install the nuts finger tight. You just want to tighten the brackets enough so they stay in place; there is no need to fully tighten them at this point.

3



Peel the backing from the adhesive tape on the brackets and apply some of the 3M Adhesion Promoter to the tape. Using a partner, place the louvers over the rear window aligning the tape edge of the louver with the top edge of the rubber strip around the rear glass. There should be 8-10mm between the louver and the C pillar on each side as shown in the photo above.