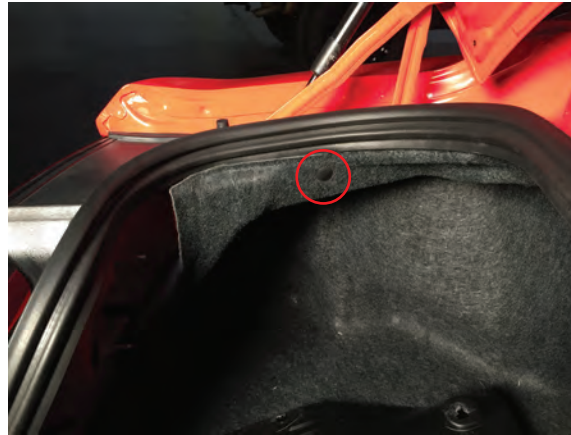


Step 1
Remove the (4) screw on fasteners holding the trunk panel in place. Then apply slight upward pressure to remove the panel from trunk.



Step 2
Using a panel removal tool or pliers, remove the plastic clip holding the trunk liner in place. Fold back the liner to access the tail light fasteners.



Step 3
Remove the (3) nuts securing the tail light to the vehicle. Unclip the tail light plug and remove the light from the vehicle.



Step 4
Remove the upper plastic trim panel from the factory tail light. Use a plastic trim removal tool and gently pry upward.



Step 5
Transfer the trim panel to the replacement tail light.



Step 6
Install the tail light in the reverse order.