

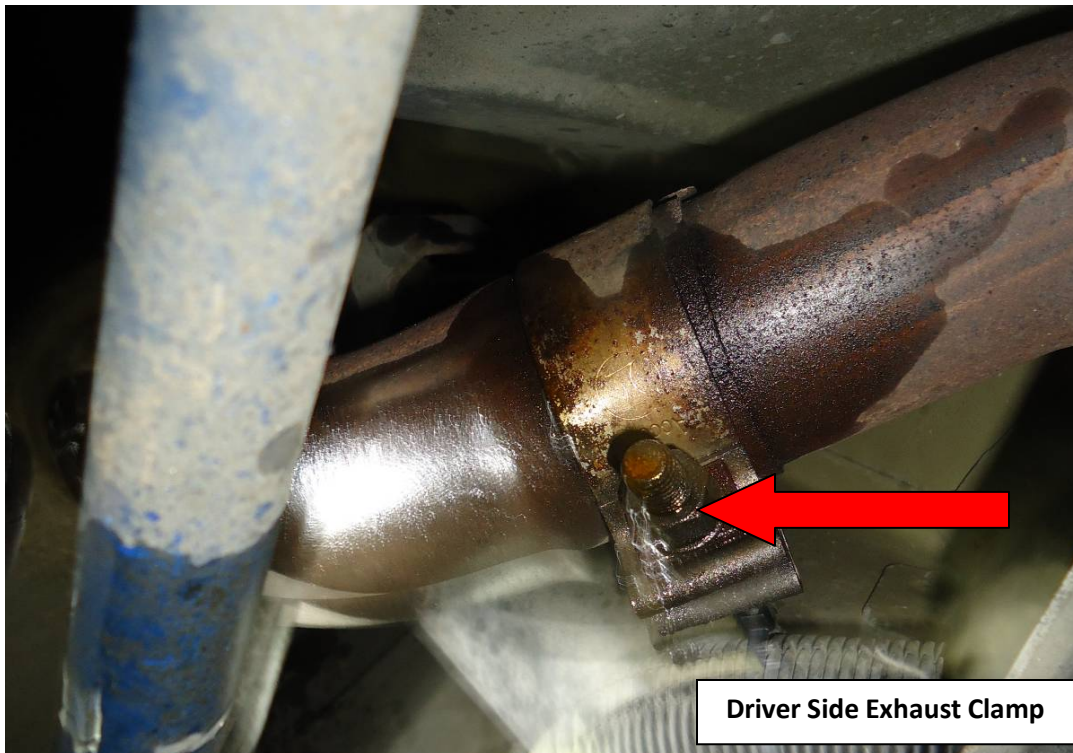
MAC Boom Tube Axle-Back Exhaust (05-10 GT, GT500)

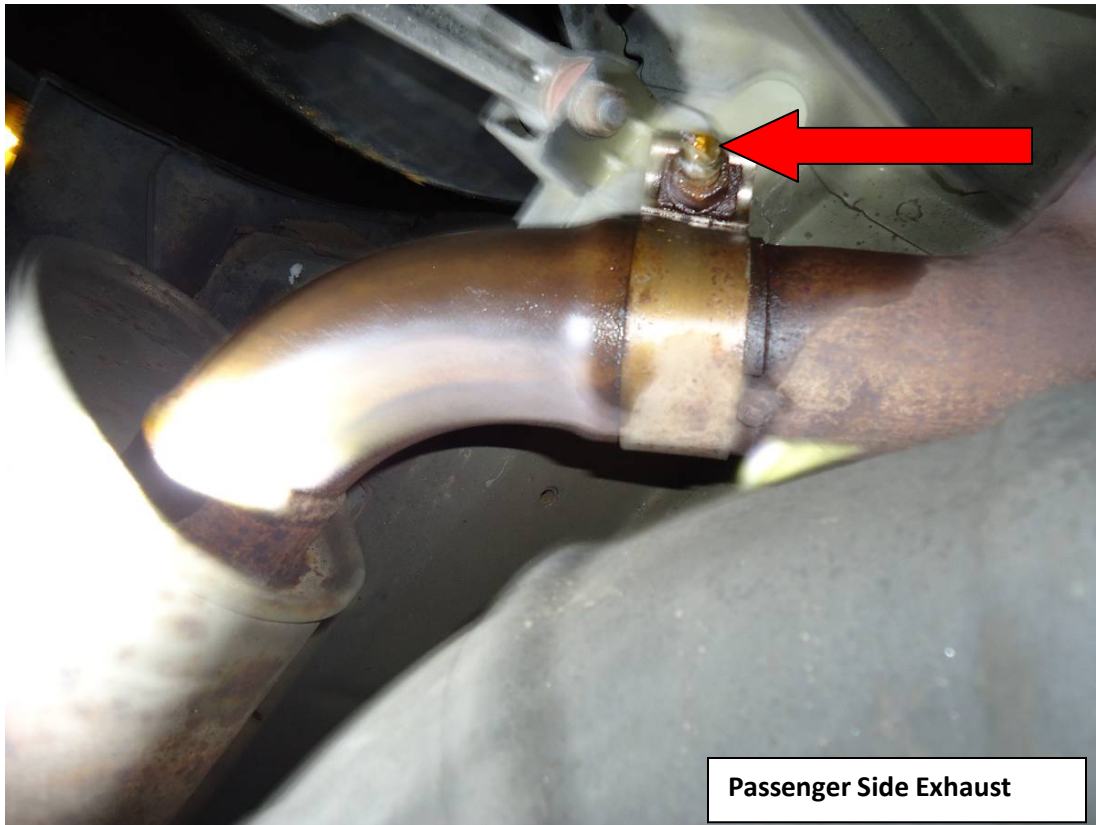
Required Tools:

- ✓ PB Blaster (or a rust-penetrating compound of your choice)
- ✓ 13mm wrench or socket
- ✓ 15mm wrench or socket
- ✓ Pipe Wrench

Installation Instructions:

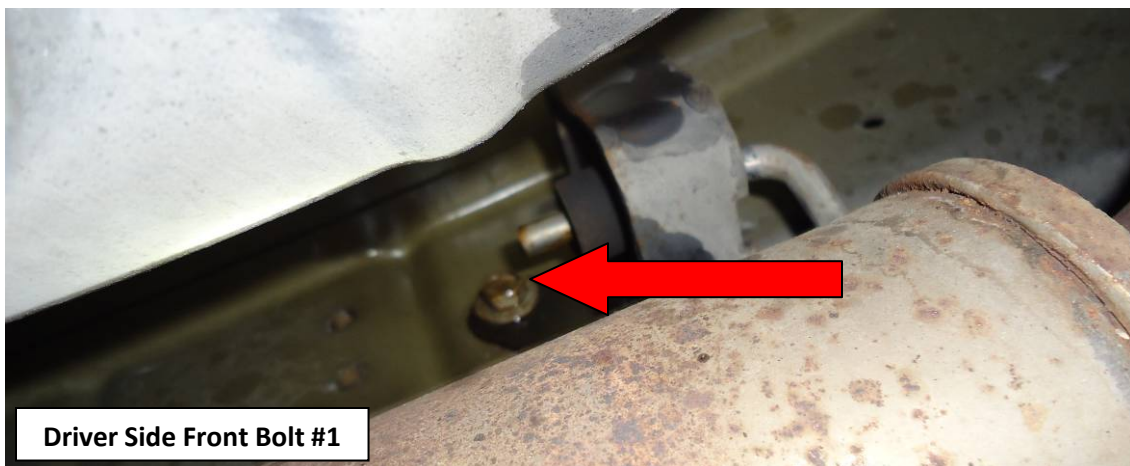
1. Place the car in Park (or 1st gear if manual) and apply the parking brake. If your car has been lowered, you may want to roll the rear end up on ramps. Be sure to use wheel chocks.
2. Locate the bolt holding the Driver's side stock axle-back system to the mid-pipe. Generously apply PB Blaster to the exhaust clamp bolt. Repeat for the Passenger side.





Passenger Side Exhaust

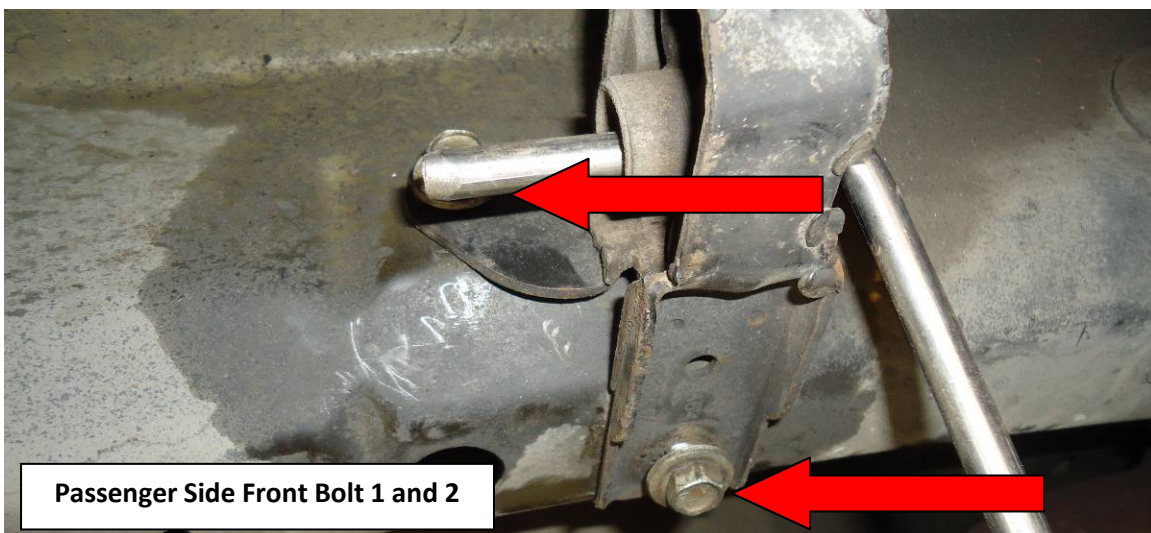
3. Use your 15mm socket to loosen each of these nuts. Slide the clamps down the pipes towards the rear end of the car.
4. The front end of each muffler (towards the driver) has (2) 13mm bolts holding an exhaust hanger to your car. The rear end of each muffler also has (2) 13mm bolts.
5. Locate the front (4) bolts and apply some of the PB Blaster to them.
6. Remove Driver Side Front Bolt 1 with your socket. You will have to use your wrench on Driver Side Front Bolt 2 because of the large stock muffler.



Driver Side Front Bolt #1

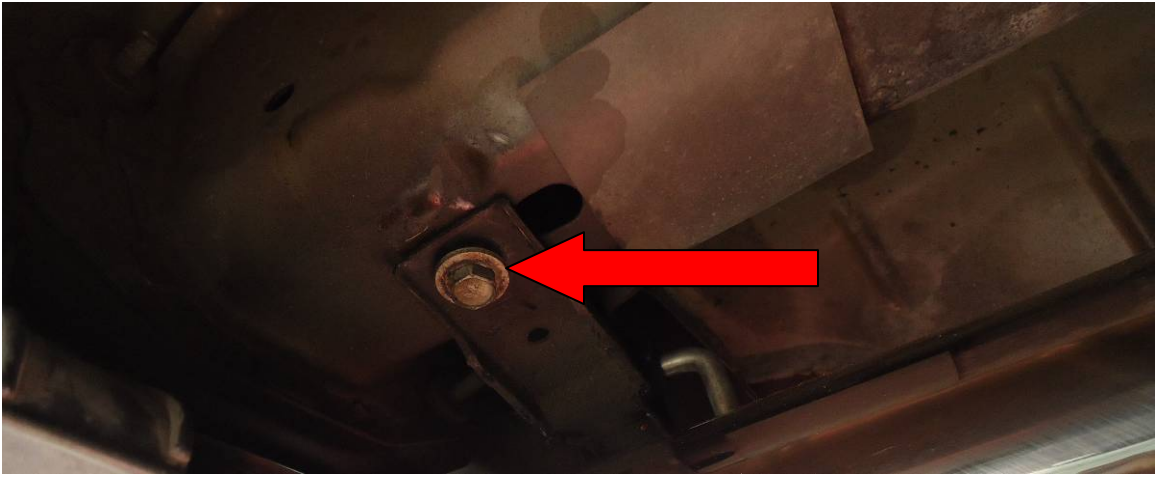


7. Remove Passenger Side Front Bolt 1 with your socket. You will have to use your wrench on Passenger Side Front Bolt 2 because of the large stock muffler.

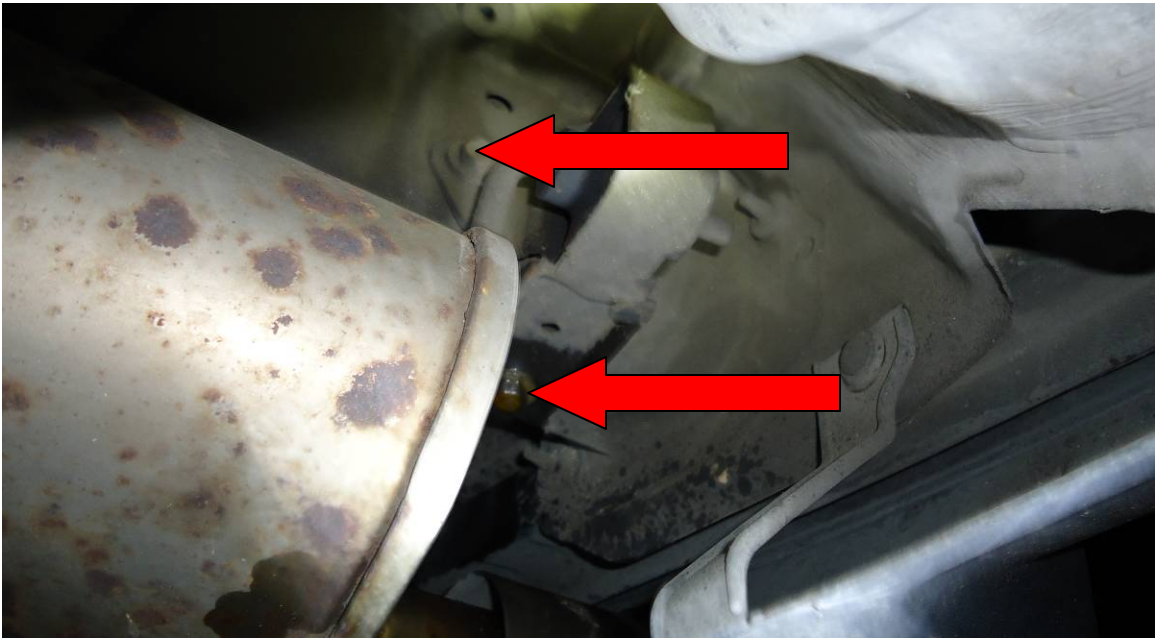


8. Locate the rear (4) bolts and apply some of the PB Blaster to them.
9. Remove Driver Side Rear Bolts 1 and 2 with your 13mm socket. You should have plenty of room.





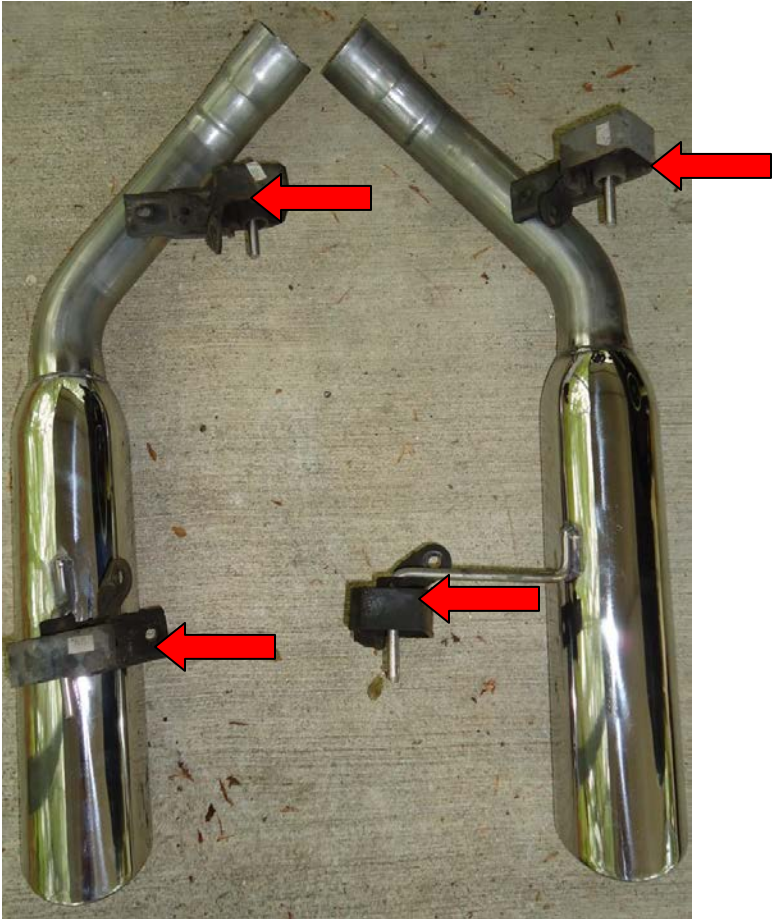
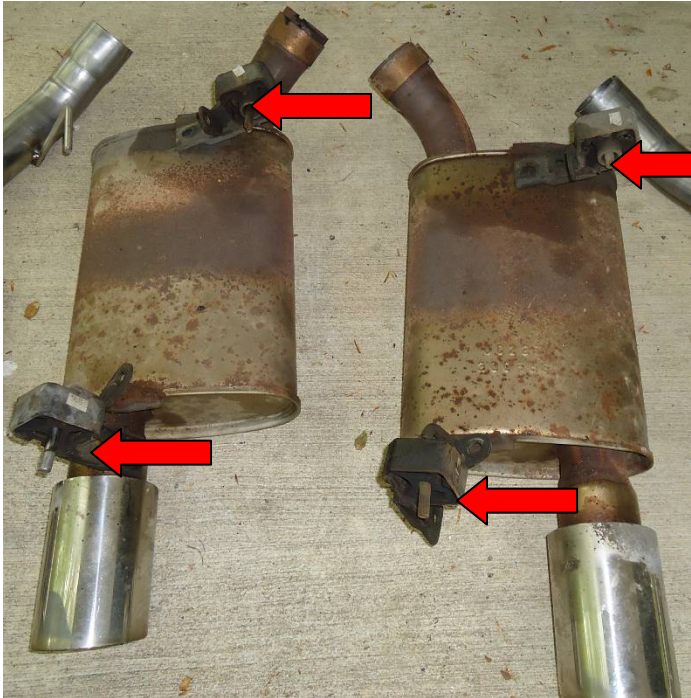
10. Remove Passenger Side Rear Bolts 1 and 2 with your 13mm socket. You should have plenty of room.



11. After all (8) bolts are removed, the hangers should be free. You can now slide each muffler off of the midpipe. You may have to twist them some because the fit is tight. Keep the Exhaust hangers on your mufflers; you'll want to be sure to put them on the Boom Tubes in the same fashion



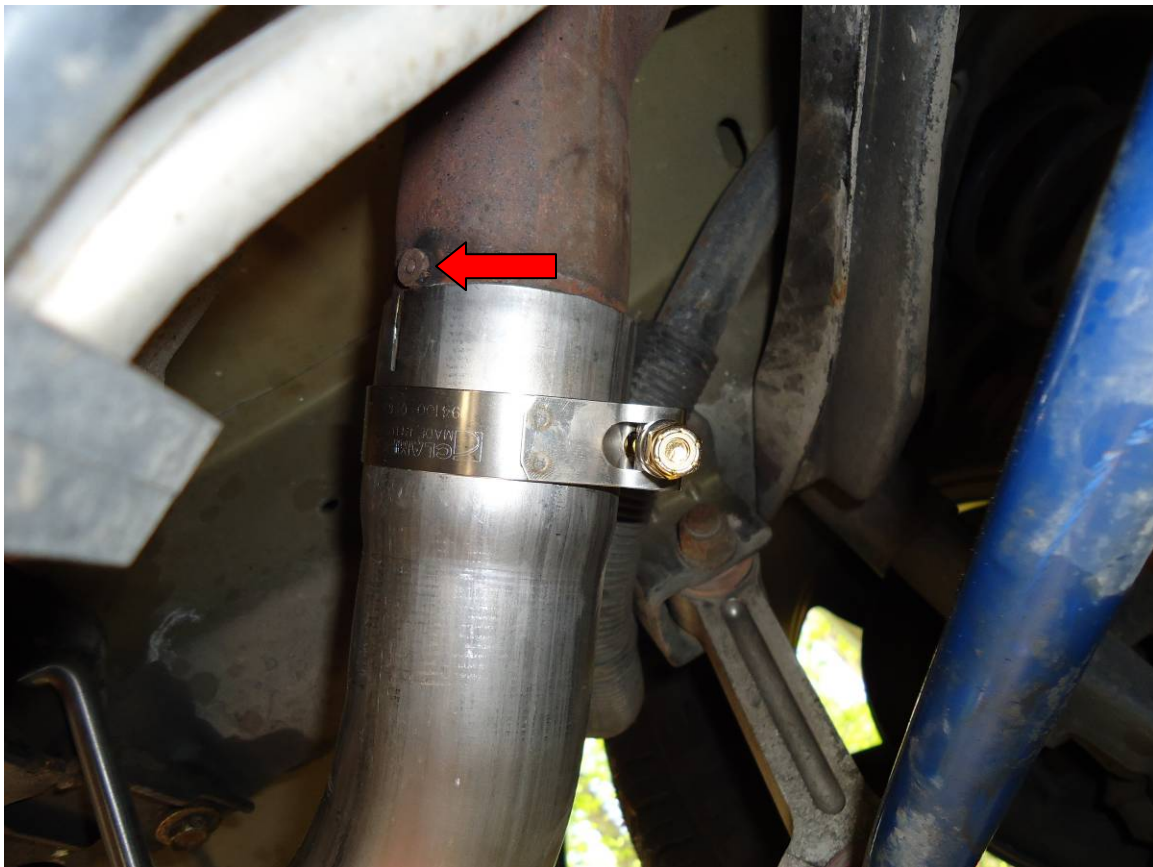
12. Lay your stock mufflers down next to the Boom Tubes. Take the hangers off of the stock mufflers and install them onto the Boom Tubes in the exact same way.



13. Take the clamps supplied with your Boom Tubes and slide them over the pipes.



14. Slide the Driver Side Boom Tube onto the mid-pipe. It will stop at the nut welded on the mid-pipe. Now re-attach at least one rear and one front 13mm bolt.



15. Install the rest of the 13mm bolts and tighten them almost all the way.

16. Holding the Boom Tube tightly against the nut, tighten the bolt on the clamp with your 15mm socket. These needs to be really tight so there are no exhaust leaks.
17. Repeat steps 14-16 for the Passenger Side.
18. Now, get down behind your car level with the pipes. Look to see if they are even with each other. If so, congratulations, you are done! If not, get the Pipe Wrench and lay under the pipe that is lower.



The Passenger Side Exhaust Tip is Too Low

19. On the pipe that is too low, grip the rear hanger. Press the pipe up while pulling down on the wrench. Do this until the desired placement is achieved.



20. Congratulations, you're done! Now fire her up and see what she sounds like!



Installation Instructions written by AmericanMuscle customer Brian Becker 5.14.12