

Part # 4412 2013-2014 Ford Mustang C-SERIES Chin Spoiler

**Notice: Install new, unpainted parts according to these instructions!
Then remove parts, paint them and re-install.
Painted or Altered Parts are Non-Refundable!**

Step 1

Jack the car up and securely place on jack stands. Remove the 14 screws that connect the splash pan to the front bumper **as shown in fig A**. Remove the 3 rear screws of the splash pan then lower and remove splash pan.

Fig.A



Step 2

Remove the screws that connect the factory chin spoiler to the bumper in the inner wheel wells **as shown in fig B**.

Fig.B



Step 3

Remove the 4 push pins, 2 on each side of the bumper holding the chin spoiler in place **as shown in fig. C**.

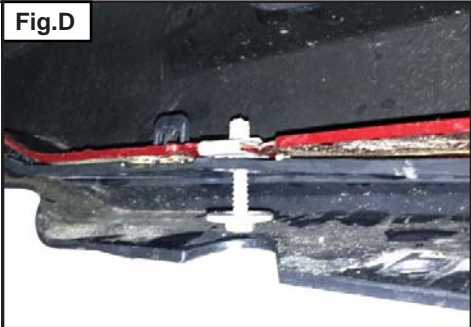
Fig.C



PART# 4412		
QTY	DESCRIPTION	HARDWARE #
4	1/4"-20 X 3/4" BOLTS	13003
8	1/4"-20 WASHERS	33004
4	1/4"-20 NUTS	36102
4	SELF TAP SCREWS	32144
1 ROLL	1/2" 2-SIDED TAPE	VHB-90

Step 4

Remove the 2 screws toward the front holding the chin spoiler in place as shown in fig. D.



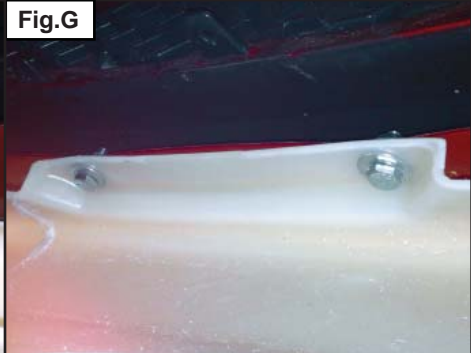
Step 5

Remove the remaining attachments with some pressure, pushing / pulling the center portion of the chin spoiler down, starting on one side, remove the chin spoiler. Remove all the threaded clips where the factory chin spoiler attached to the bumper as shown in fig. E.



Step 6

Holding the new chin spoiler in place install the 1/4"-20 bolts, nuts and washers through the chin spoiler and into the front bumper as shown in fig. F & fig G. (After the part has been painted, adhere the 2 sided tape to the bumper before tightening the screws in this step.)



Step 7

Reinstall the 2 screws in each wheel well securing the sides of the chin spoiler to the bumper as shown in fig. H.



Step 8 THIS STEP IS MODEL SPECIFIC!

GT & V6 MODELS ONLY!

On GT & V6 models, you will need to trim the splash pan portion of the Chin Spoiler across the 4 connecting tabs **as shown in fig. I**, in order to fit the under side of the GT & V6. Reinstall the splash pan. Insert the front of the pan below the bumper but inside the new chin spoiler. Now reinstall the rear screws of the splash pan. Install the 4 self tapping screws through the chin spoiler and into the splash pan **as shown in fig. J**.

BOSS & California Special (CS) MODELS ONLY!

On BOSS & CS models, **NO TRIMMING IS NEEDED!** Reinstall the splash pan. Insert the front of the pan below the bumper but inside the new chin spoiler. Now reinstall the rear screws of the splash pan. Install the 4 Self Tapping Screws through the chin spoiler and into the splash pan **as shown in fig. J**.

Fig.I

(1 OF 4 TABS)
CUT HERE ON ALL TABS

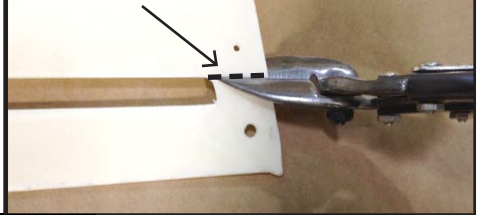
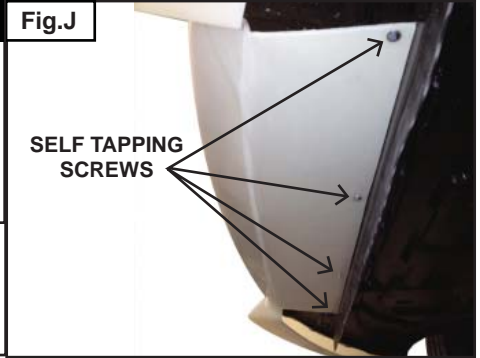


Fig.J

SELF TAPPING
SCREWS



Step 9

After the part has been painted, install the 2 sided tape **as shown in fig. K**. Stop the tape 1 inch short from the corner **as shown in fig. L**. When installing the chin spoiler to the bumper peel back and fold about 2 inches of each piece of the red tape backing then install to the car. Once the chin spoiler is positioned properly, peel the tape backing away and apply pressure to the part to adhere it to the car.

Fig.K

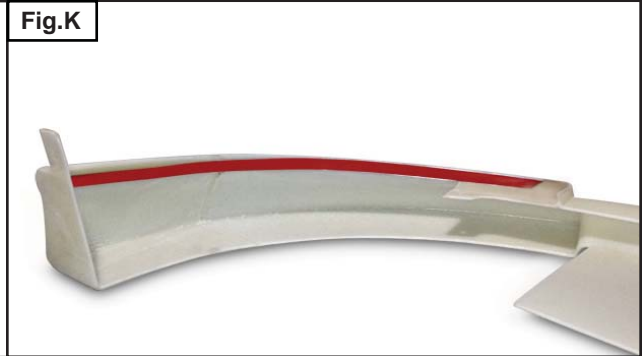


Fig.L



URETHANE PAINTING INSTRUCTIONS

VERY IMPORTANT: The following painting procedures MUST be followed EXACTLY for PROPER ADHESION and to prevent fish eyes.

1. To remove any mold release contaminants, clean the back of the part first. Using 2 new clean rags, saturate the first rag with plastic prep cleaner* and begin cleaning. Then use the second rag to remove the prep cleaner. Continuously fold both rags to their clean sides during the process. Use 3 sets of new rags throughout the process. This prevents mold release contaminants from transferring to the painted surface.
2. Repeat step one on the front of the part.
3. Rinse the part with water. Apply a generous amount of Ajax® or sand fix* to a red scuff pad* (3M Scotch Brite Brand) and scrub the surface to be painted THOROUGHLY (especially where the 2-sided tape is installed, on the back side of the part, and all the hard to reach areas). Then rinse with water and dry. The scrubbed surface should be dull. If any shiny spots show, repeat the process on those areas.
4. Using another set of clean new rags, again clean the surface to be painted with plastic prep cleaner.
5. Spray the surface to be painted with adhesion promoter* including the areas where the 2-sided tape is installed (follow the instructions on the can for application and drying time).
6. Apply 3 to 4 coats of urethane primer* with flex additive* (follow the instructions on the can for application and drying time).
7. Wet sand primer with 600 grit sandpaper. Be careful not to sand through the primer. If you do, you MUST clean those areas with plastic prep cleaner, apply adhesion promoter and prime. Once the primer has dried, wet sand the areas that were touched up. Your surface is now ready for paint.

* These items can be purchased at any auto body supply store.