

# iPad Mini Dash Mount Kit (10-14 All)

**Time Necessary:** Approximately 30 minutes

**Tools Required:**

- Ratchet
- 7mm
- Super glue
- 3M Masking tape
- Spacer

## **Removal Procedure:**

1. Firmly grip the center console and lift up to release the clips held in.
2. Once center console is removed, remove the (2) 7mm bolts.



**3. Unplug and set aside**

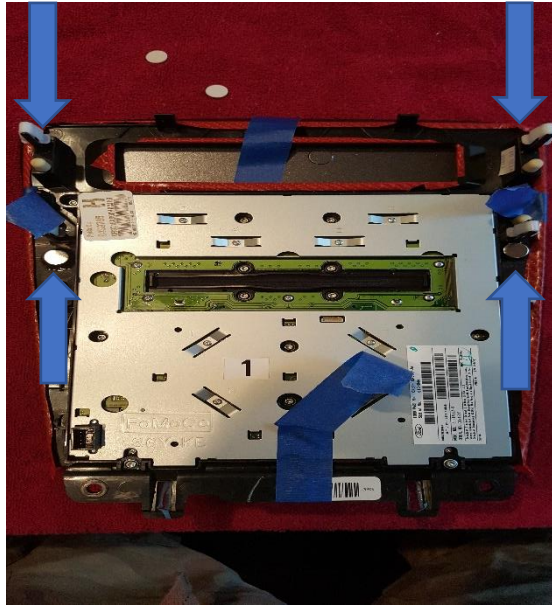


**Positioning iPad Kit and installing magnets:**

- 4. While console is lying face up, use the supplied spacer so that the iPad kit will have the correct spacing. Apply 3m masking tape to hold in place.**



5. Flip over. Place magnets on opposite side to find the exact location. Scuff up plastic and apply super glue and place magnets. Let sit for 5-10 minutes



6. Remove 3m tape and spacer. Reinstall in vehicle and enjoy



Installation Instruction written by American Muscle customer Desmond Brandon 3.17.17

