

BMR Billet Aluminum Rear Sway Bar End Link (05-10 All; 07-14 GT500)

Time Necessary: Approximately 1 hour

Tools Required:

- Ratchet
- 15mm deep socket



Removal Procedure:

1. Position car onto ramps or hoist. Engage emergency brake.
2. Place bricks or chocks in front of and behind each front wheel.
3. There are (2) bolts on either side of sway bar, (4) in total, you must loosen and remove all four using ratchet and 15mm socket.



4. Once free, remove sway bar from underneath the car



5. Slide off (2) poly bushings and (2) old end links

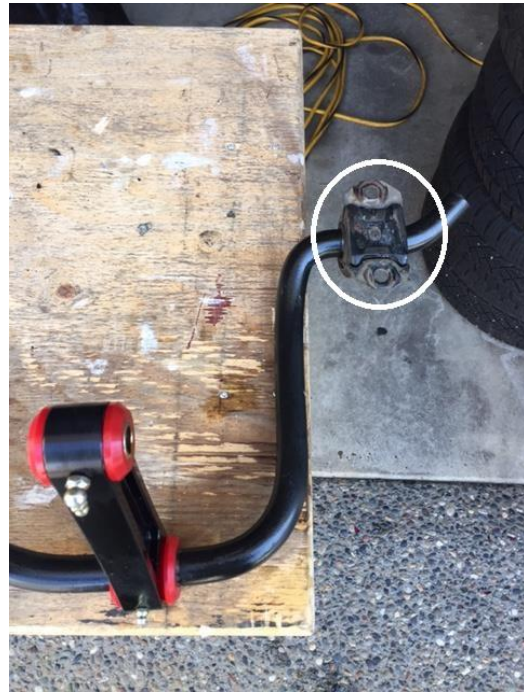


6. Slide on new end links with grease nipples facing forward

Please Note: Sway bar mounts may vary so test fit end links before sliding them on to sway bar to determine which way you should face the grease nipples.



7. Slide on poly bushings and mounts(2)



8. Reposition sway bar underneath car
9. Hand tighten all 6 bolts, left and right top mounts (2) left and right bushings (4)

Please Note: Hand tighten bolts as you may need to slide sway bar or end links back into correct position.

Top Mount

Bushing Bracket



10. Using the ratchet and 15mm socket tighten all bolts.



11. Remove bricks/ chocks from front tires and drive the car off the ramps



12. Enjoy improved ride quality!

Installation instructions written by American Muscle customer Brandon Rowley

Year: 2010

Make: Ford

Model: Mustang

Trim: GT500