



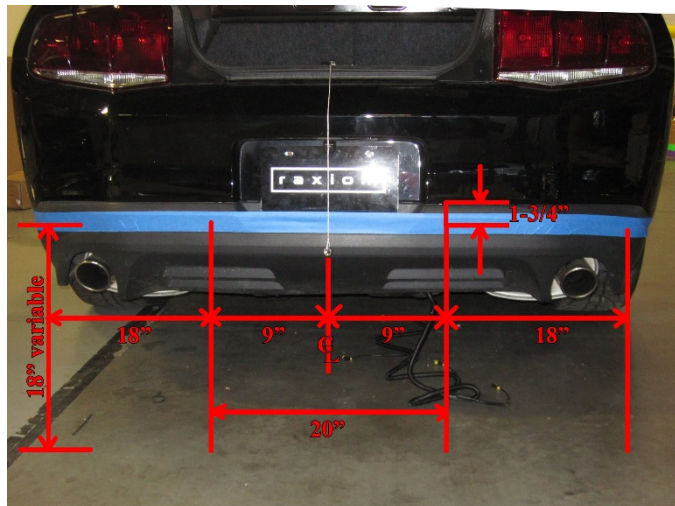
Installation Instructions for Raxiom Mustang Backup Sensor Install

Tools Required:

Tape measure Power drill
Wire snake Small regular screwdriver
Razor knife Pliers

Step 1:

Park on a level surface, with all 4 tires on the ground. Set the parking brake and put the car in gear or park for automatics. Find the center of the rear bumper by hanging a plumb bob (a nut hung from a string will work fine) from the trunk striker. Measure out 9" from the centerline to the first drill hole. Measure out an additional 18" from the first hole, to mark the exterior hole. Repeat this on the opposite side. Measure 19-1/2" up from the ground to mark the 2 center holes. Measure 18" up from the ground to the exterior holes. Depending on wheel size, tire size, lowering springs, etc. the distance from the ground to the sensors will change for each vehicle.



Step 2:

Use the included hole saw to drill out the (4) spots that were marked in the previous steps.



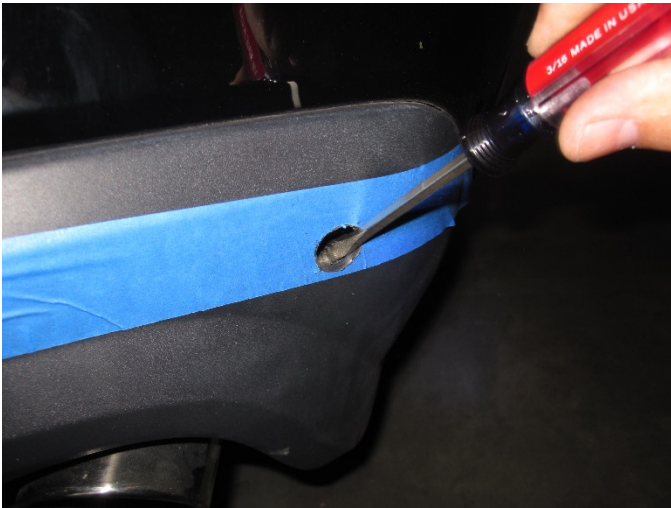
Step 3:

Use a razor blade to clean up the edges of the hole, before installing the sensors.



Step 4:

Use a flathead screwdriver to remove some of the foam at the bottom of the outside holes.



Step 6:

This is a view of the rubber grommet from inside the vehicle.



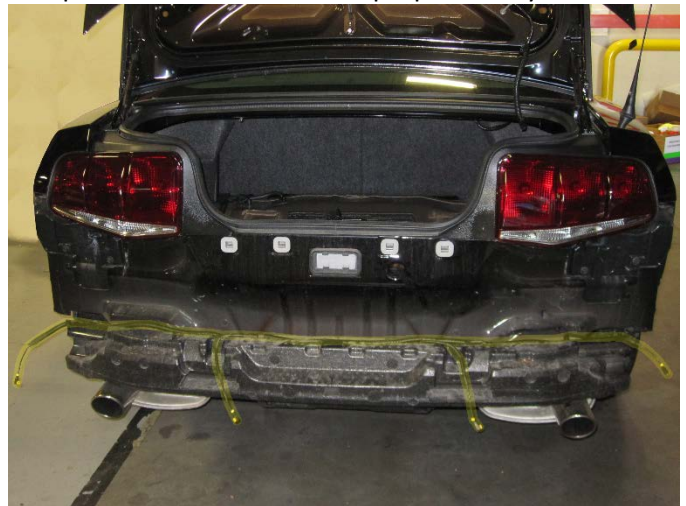
Step 5:

Find the rubber grommet on the passenger side floor of the spare tire tub. Remove it. Drill or cut out the center of the grommet, cut a slit from the outside to the inside hole. Insert the wire harness into the grommet and reinstall it into the car. Route the yellow sensor connections to the bumper as shown.



Step 7:

This is the general layout of the wiring behind the bumper. This is for illustration purposes only.



Step 8:

Route the wiring behind the bumper. Using a wire snake inserted from the outside of the bumper to the inside, then taping the wire to it and pulling it through is the easiest way to run the wires. Start with the far right sensor wire. Run it up and over the top of the bumper foam, then through the hole. Continue to the driver's side of the car. Keep the wires away from exhausts, hot areas and moving parts.



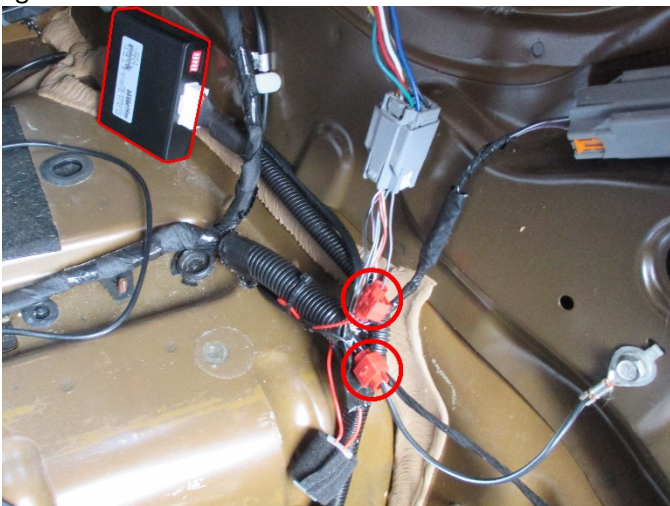
Step 10:

Place the speaker behind the back seat, then run the wire down, behind the trim to the black box mounted in the trunk.



Step 9:

Working on the right side of the trunk. Install the black box in a dry, safe area where it won't be damaged by items in the trunk. Attach the BLACK WIRE to the BLACK WITH WHITE GROUND WIRE that is bolted to the back of the trunk. Attach the RED WIRE to the GRAY WITH PURPLE WIRE (12v. Reverse trigger) leading to the tail light harness.



Step 11:

Use the included angle measuring device to check which angle correcting insert should be used to keep the face of the sensor vertical.



Step 12:

To change bezels for different degree bezels supplied Uninstall the sensor from the default bezel by pulling out on the 2 side tabs and pushing the sensor from the front to the back. Reinstall the sensor into the 12 degree angled sensor bezel, by sliding it in from the rear. Repeat this for the other 3 sensors.



Step 13:

Plug the back up sensor into the wiring harness and insert the sensor into the bumper.



Step 14:

Place the sensor into the bumper with the dot on the face of the sensor pointing upward.



“Due to possible manufacturer changes, it is recommended that you test all wires using a voltage meter or similar device to confirm the wires being used are correct for purposes intended. Failure to do so may result in damage or product failure.”