

## How to install the Leather Emergency Brake Boot

Item #12762 & 12764

### Tools needed:

- ✓ Small flathead screwdriver (optional)
- ✓ Small bottle of superglue
- ✓ Small amount of soapy water (or lubricant to slide the factory e-brake boot off)
- ✓ Paper towels

**Step 1:** Remove your shifter knob (and shifter boot retaining ring if equipped).



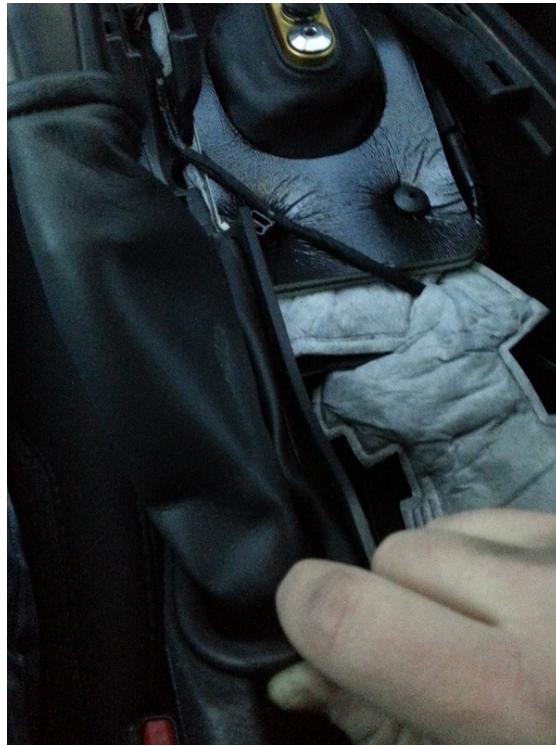
**Step 2:** Empty your cupholders, open the center console, grasp the center trim and firmly pull straight up.



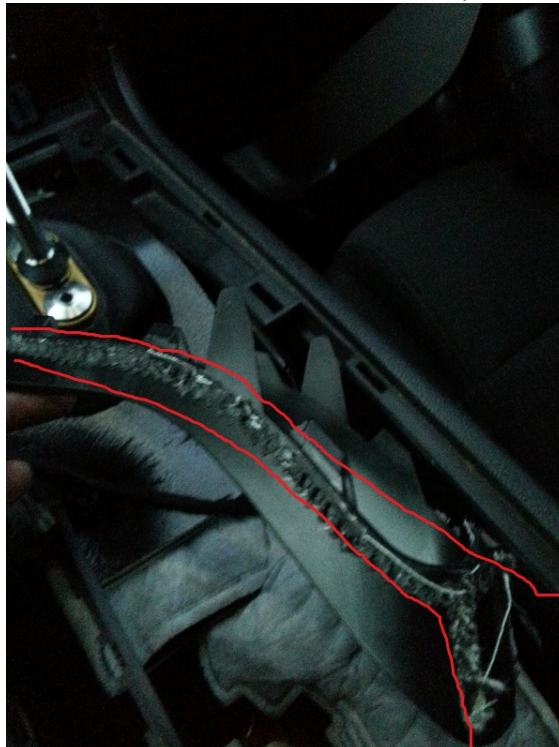
**Step 3:** Unclip the harness from the 3-button cluster. The release clip is on the passenger side of the connector.



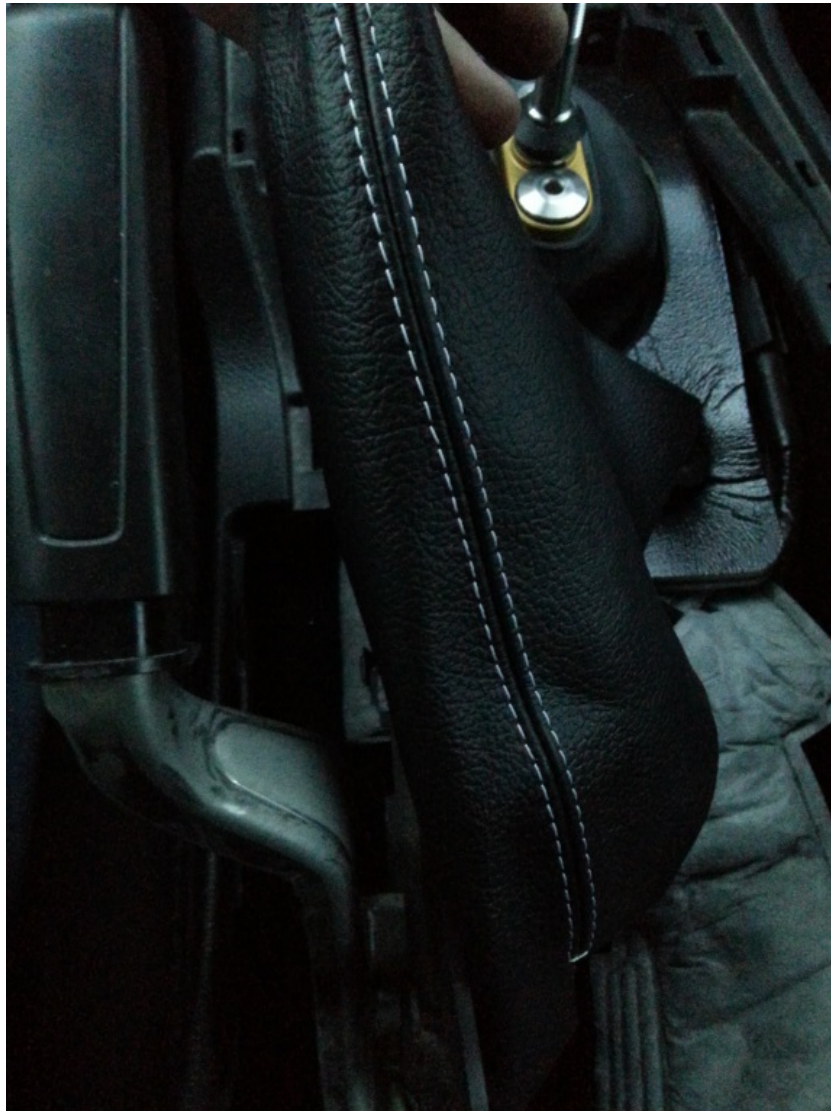
**Step 4:** Pinch the back of the emergency brake boot retainer and pull up & towards the e-brake handle to release the trim ring. Lubricate the e-brake handle with a light coating of soapy water or similar lubricant and slide the factory boot over the e-brake handle. Dry the handle with a paper towel.



**Step 5:** Remove the factory boot from the trim ring, being careful not to break the plastic trim ring. The optional small flathead screwdriver may come in handy here. Note: The factory e-brake boot may/will tear during removal and will not be reusable due to poor quality materials. Some of the factory boot will adhere to the trim ring. Remove as much of this as possible. Do not worry if you can't remove it all, move on to the next step.



**Step 6:** Align the AM leather e-brake boot on the trim ring. The white stitching should face upwards towards the roof of the car.



**Step 7:** Center the stitching with the back of the trim ring, this is important as you only have one shot. Starting with the back of the boot, begin gluing the boot to the trim ring. Apply glue, attach boot and hold together until the glue is dry (20-90 seconds). Be careful so that you don't glue your fingers to the boot. Move on to the front of the trim ring. Repeat attachment procedures. Next begin working on the sides, only glue 1-2 inches at a time to ensure that you have adequate time to attach the boot to the ring before the glue begins to take set. Once the entire boot is glued, wait another 2-5 minutes to ensure that the glue has dried completely.

**Step 8:** Re-lubricate the e-brake handle and slide the ring and boot over the handle. Once the boot lip is set onto the handle, dry the boot and handle completely before continuing.

**Step 9:** Align the tabs on the e-brake boot trim ring to its mating surface and push down, ensuring that the trim ring has seated in its mating surface. Re-clip the 3-button harness onto the 3-button cluster, align the tabs on the center console/cupholder and push down, ensuring that the trim is properly seated. Reinstall your shifter knob. Clean up the area and you're done.



**Enjoy your new better looking & higher quality E-brake boot!**

**Installation Instructions Written By AmericanMuscle Customer Jacob Doster 11.13.2013**