

Installation Instructions for Upper Overlay Grille (05-09 GT Mustang)

Tools Required:

Drill & 1/8 Bit
Phillips Head Screwdriver
Flat Head Screwdriver

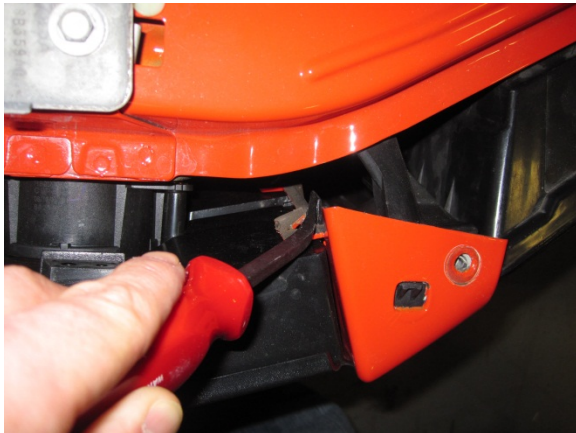
Step 1:

Remove the 6 plastic retaining clips holding the upper plastic radiator cover to the radiator support and remove it from the vehicle.



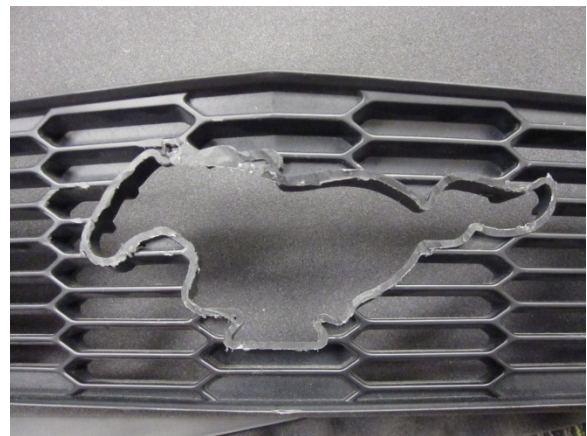
Step 2:

Remove the grille by prying gently on the bumper cover tabs holding the grille and pulling outwards as shown.



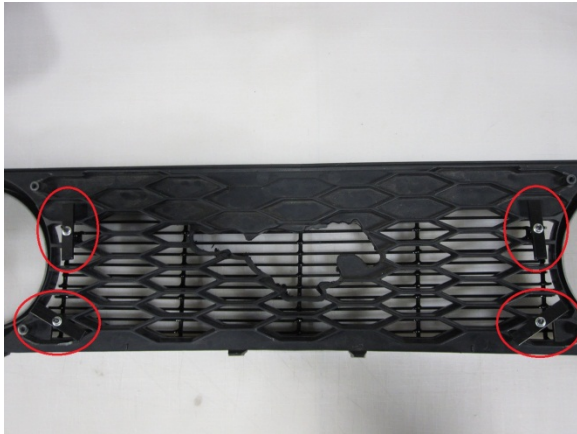
Step 3: ***For Pony Delete Grilles Only***

Using a flat head screwdriver or trim removal tool, pry off the retaining nuts and remove the pony emblem from the grille. Once the emblem is removed, use a dremel or similar cutting tool to cut the pony from the grille until the area is flush.



Step 4:

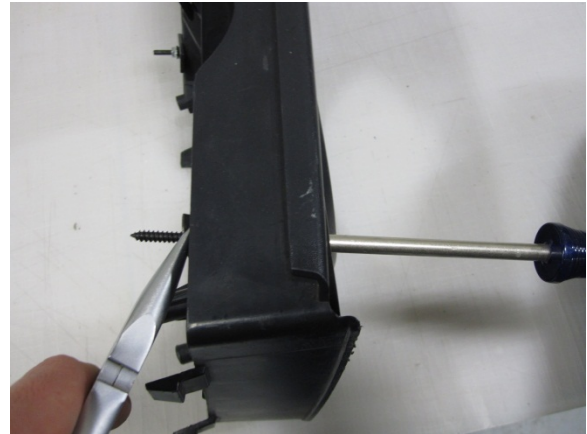
Install the large center section using the 4 machine screws, rectangular plates, and machine nuts as shown. Be sure to angle the lower rectangular plates so they don't interfere with the bumper during re-installation.

**Step 5:**

Lay the two small side grille panels over the grille (Be sure to have them on the correct side, there are slight differences). Once properly aligned, push something through the mounting holes and mark the grille behind them. Use an 1/8 bit to drill the 4 mounting holes as shown.

**Step 6:**

Use the included self-tapping screws to install the side panels to the factory grille. If you used a 1/8 bit, they should tap the holes to the proper size themselves. If not, use the included speed nuts to secure the self-tapping screws as shown (you may have to use pliers to hold the speed nut while tightening the screw).

**Step 7:**

Once all hardware is secure and the grille properly aligned, re-install the factory grille in the front bumper and replace the radiator shroud to complete the installation.

Installation Instructions for Lower Billet Grilles (05-09 Mustang)

Tools Needed:

Phillips Head Screwdriver
5.5 mm Wrench or Socket

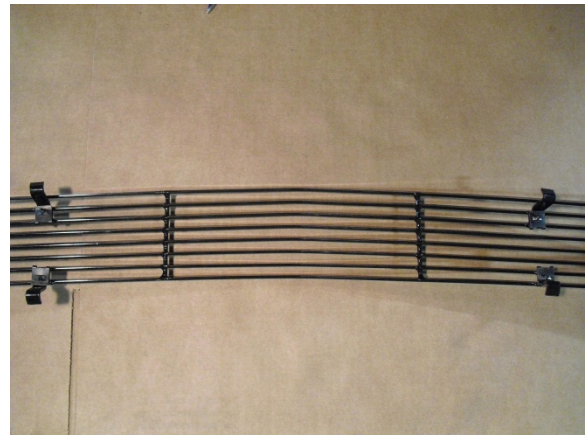
Step 1:

Safely raise the front end of the car to gain access to the plastic drip pan located behind the front bumper. Remove the seven 5.5 mm screws securing the pan and remove it from the vehicle.



Step 3:

Pre-thread the hardware on the grille using the four U-Clip / J-Hook assemblies from Step 3 and the four included sheet metal screws. Do not fully tighten the screws, only thread them in 3-4 turns.



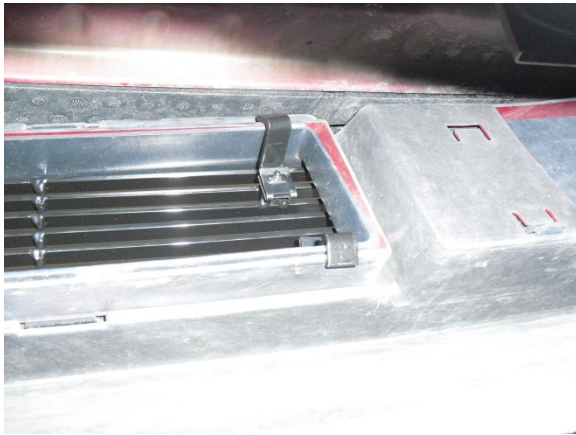
Step 2:

Place the four included U-Clips over the four included J-Hooks as shown.



Step 4:

Place the billet grille over the factory grille. From underneath the car, adjust the J-Hooks to wrap around the factory plastic grille as shown.



Step 5:

Once all of the hooks are secured around the factory bumper, use a Phillips head screwdriver to tighten the screws from the front of the vehicle.



Step 6:

After making sure grille is properly aligned and secured, re-install the factory drip pan that was removed in Step1 to complete the installation.